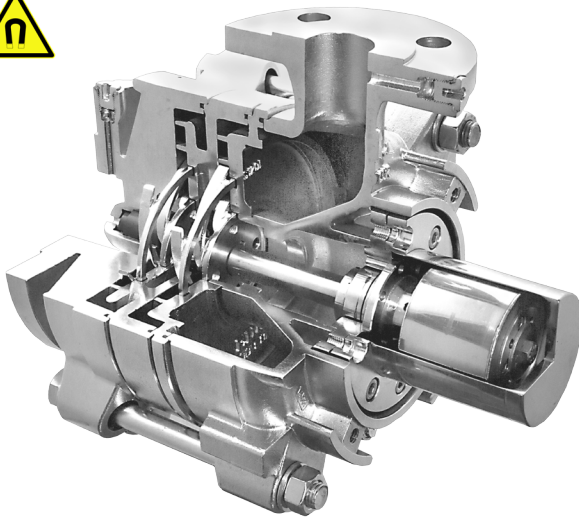


EDUR – Centrifugal Pumps for Cooling Agents

with magnetic coupling - Types LBM / NHM / NMBL



fluorinated coolings
DME/NH₃ propane isobutane
ammonia
carbon dioxide propene

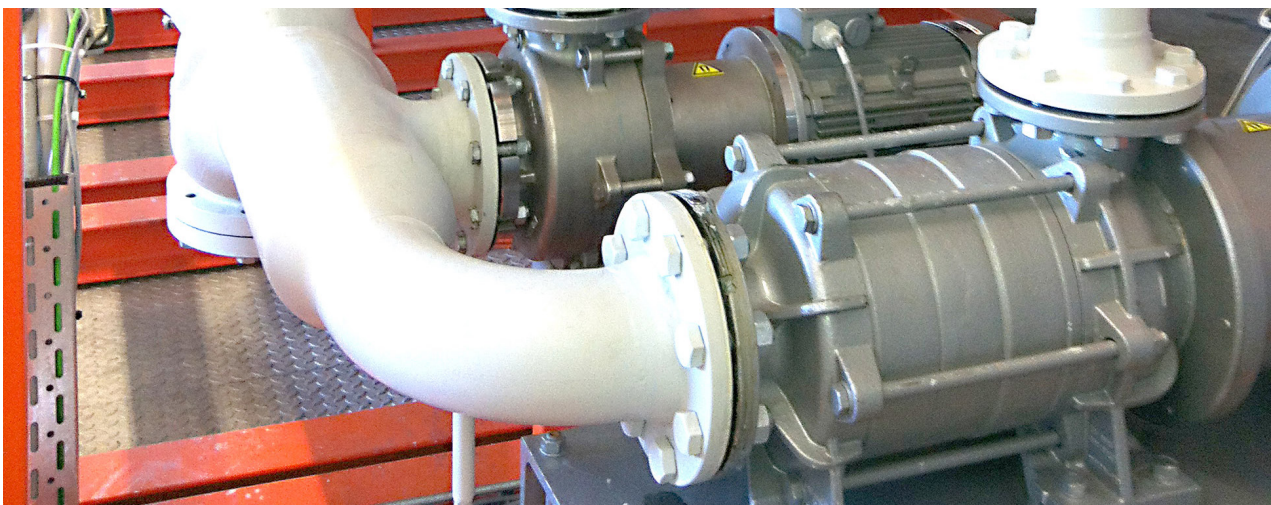


Hermetically sealed pumps
for the process industry

Advantages



ברלין טכנולוגיות בע"מ
שדרות גן רווה 13, יבנה, 8122214
<http://www.berlintech.co.il/>
mail@berlintech.co.il
טלפון: 08-6638100
פקס: 08-6638120



EDUR Pump in an absorption cooling system in the dairy industry

Pump units with magnetic coupling do meet the increased requirements especially for the handling of toxic and environmentally hazardous substances like ammonia, fluorinated cooling agents or carbon dioxide.

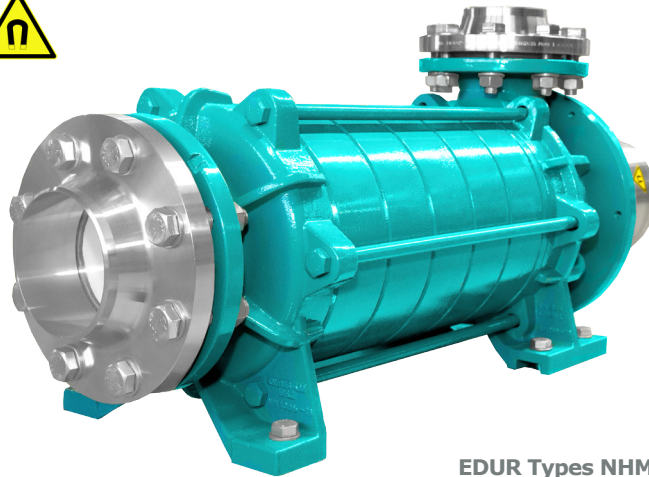
The motor driving torque is being transmitted to the pump shaft by means of magnetic field forces. A „separating can“ is separating the pump interior from the atmosphere hermetically. By customer request EDUR pumps also can be equipped with high efficient magnetic couplings, in order to meet the increasing requirements for energy efficiency. A plastics separation can here does avoid the formation of eddy current losses.

EDUR - your specialist for all pump demands from the cooling technique

- hermetically sealed
- low wear
- maintenance free
- high operating reliability
- long service life
- high energy efficiency by plastics separation can
- no heat transfer into the medium
- gas handling characteristics
- short delivery times
- various certifications
- low NPSH values

EDUR – Centrifugal Pumps for Cooling Agents

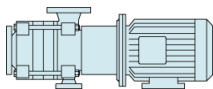
with magnetic coupling - Types LBM / NHM / NMBL



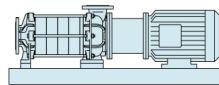
EDUR Types NHM

Constructional Features

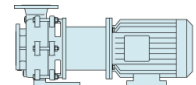
Overview Performance Graphs



LBM



NHM



NMBL

Design

- segmental type horizontal
- pump and motor positively centered by lantern

Ranges of Application

- design pressure up to 25 bar (40 bar)
- temperature -60°C to 220°C

Pump Materials

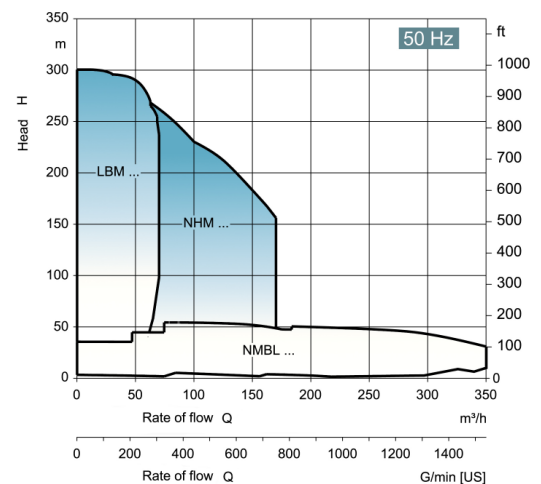
- ductile iron
- stainless steel

Coupling System

- permanent magnetic coupling
- inner rotor completely encapsulated in 1.4571
- canister made of 1.4571, the shell of 2.4610
- high efficiency option with carbon fibre reinforced PEEK canister
- SIC ceramic plain bearings (axial- and radial bearing)

Standard Drive

- IEC three-phase A.C. motors IE3, IE4
- enclosure IP 55, insulation class F
- up to 4,0 kW 230/400 V, from 5,5 kW 400 VΔ, 50 Hz
- ATEX-executions on request
- variable-speed control on request



EDUR Pumpenfabrik
 Eduard Redlien GmbH & Co. KG
 Edisonstraße 33
 24145 Kiel - Germany
 phone + 49 431 - 68 98 68
 fax + 49 431 - 68 98 800
 www.edur.com
 info@edur.de