



HYDRAJAWS[®]
LIMITED

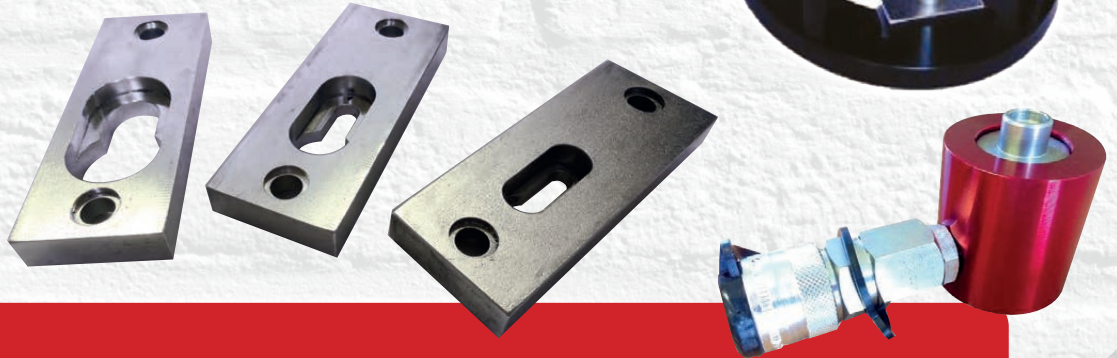
Model 0095

Long Stroke Tester Kit

“The Model 0095 Long Stroke Tester determines the strength and suitability of fixings in built-up roofing constructions where performance data is unavailable.

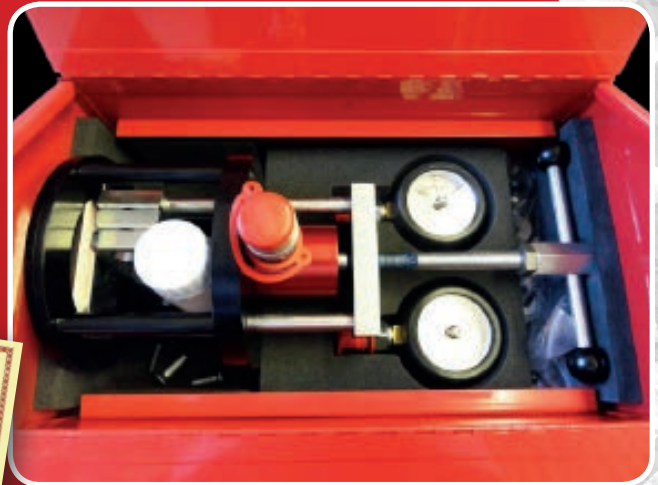
The long stroke of 80mm means that once tested the fixing can be completely extracted.

The large area of the tester base reduces the pressure on fragile roofing materials to prevent damage. At a load of 10kN the pressure is less than 1N/mm²



Kit contents

- Gauge 1: with quick release hydraulic coupler
- Gauge 2: with quick release hydraulic coupler
Choice of gauges from 5kN, 10kN, 15kN, 20kN, 25kN
- Cylindrical Load Spreading Bridge
- Capsule and hydraulic body coupler
- Tester frame incorporating Operating Rod, Top plate and handle assembly
- Button Adaptors: 6 slotted and 6 threaded
- 4 interchangeable pulling plates (3+1 in situ)
- Oil Bottle with hydraulic coupler
- Allan Key
- Spare screws
- Metal Carry Box with Filler
- Operating Instructions
- Calibration Certificate



HYDRAJAWS[®]
LIMITED



ברלין טכנולוגיות בע"מ
8122214 שדרות גן רווח 13, יבנה,
<http://www.berlintech.co.il/>
mail@berlintech.co.il
טלפון: 08-6638100
פקס: 08-6638120

hill, Birmingham B46 1JA
+44 (0)1675 465 950
tester@hydradjaws.co.uk

