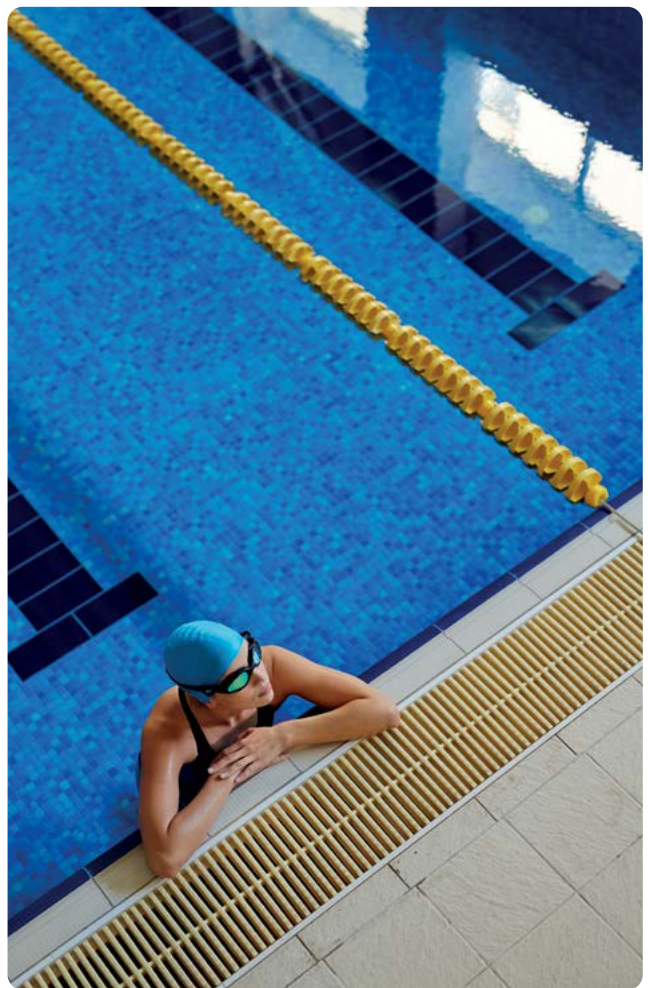


# seko

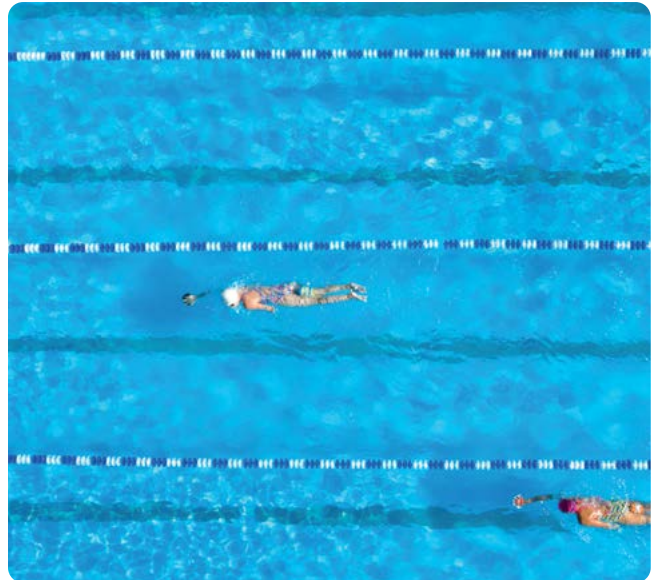
## Pools & Spas

Product Catalogue 2024



# Contents

Introducing Pools & Spas	3
SEKO Connectivity Solutions	4
SekoWeb & SekoLink	5
Equipment for Residential Pools & Spas	6
PoolOne	
PoolDose	
PoolDose Double	
KemiDose Double	
Equipment for Spa Pools & Saunas	14
PoolDose Double Spa	
Pre-Assembled Panels for Residential Pools & Spas	16
PoolDose Panel Series	
Equipment for Professional Pools	20
Pool Photometer	
Photometer Systems	
Kontrol Guard Fort	
Kontrol 800 Panel	
Kontrol 800 Tech Panel	
KommBox	
KommSpot	
PoolFeeder XL, L & M	
Kompact	
Tekna	
Spring	
Kontrol 40	
Kontrol 65	
Kontrol 100	
Kontrol 42	
Kontrol 102	
Kontrol 800	
Kontrol 800 Tech	
Side Channel Blowers	
Accessories for Pools & Spas	44
Probes	
Modular Probe Holder	
By-pass Probe Holders	
Clamp Saddles	
Cables	
Buffer Solution pH/ORP	
Housing and Filter Cartridges	
Water Meters	
Tanks	
Containment Tanks	
Reinforcement Plates	
Tank Mixers	



**Please note** that SEKO products are specially designed for professional use in industrial applications and as such are not available for domestic or retail sales.



# Pools & Spas

## Essential water-treatment solutions for pristine pools and spas

From residential pools and spas to multi-facility leisure centres and water parks, achieving the precise chemical performance that delivers a perfect swimming and bathing experience requires an exceptional water-treatment solution.

A SEKO solution.

- **Consistently precise dosing** via high-accuracy peristaltic, solenoid and motor-driven metering pumps capable of ultra-fine adjustments
- **IoT connectivity** for unparalleled operational efficiency, with live and historic data on demand courtesy of our dedicated SekoWeb app
- **Analysis and control of key water-quality parameters** to help remove and prevent contaminants such as legionella and pathogens
- **Reduced running costs** courtesy of premium materials that provide superior chemical compatibility and minimal maintenance requirement



- **System safety** with dust-tight IP65-rated enclosures, CE/UL compliance and galvanic electrical insulation
- **Ease of use** via automatic proportional dosing, universal programming language and intuitive multi-language controllers
- **Simple installation** with products designed for the appropriate level of expertise; from complex multi-pump systems to plug-and-play dosing units

## Applications



Residential  
Pools



Spas



Professional  
Pools

# SEKO Connectivity Solutions

In today's connected world, users expect to manage their equipment remotely, using the Internet of Things to access operational information via smart device or computer at their convenience. Whether viewing data in real time or analysing it historically, remote connectivity allows costs to be optimised and downtime reduced through planned maintenance.

## Data on Demand

With the dedicated SekoWeb online platform and app, SEKO users can connect to their equipment like never before. Whether at work, at home or on the move, operators can access their systems across multiple locations worldwide in an instant from a single intuitive platform.

**SEKO's IoT-enabled systems allow users to:**

- Monitor their overall business processes
- Improve customer experience
- Save time and money
- Enhance employee productivity
- Integrate and adapt business models
- Make better business decisions
- Generate more revenue

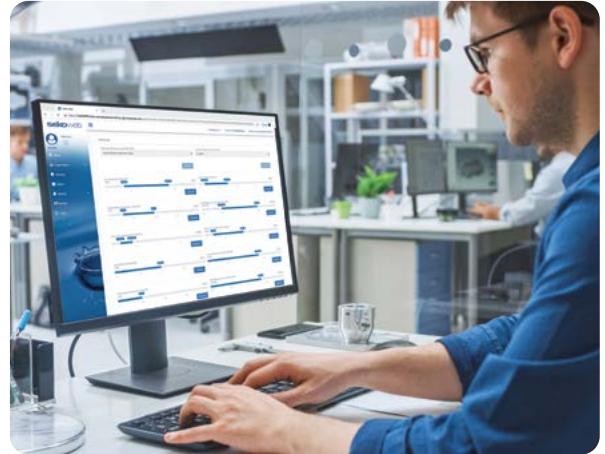




## Professional dosing pump management platform

SekoWeb has been created exclusively for engineers, meaning it requires expert technical knowledge to navigate, with password protection ensuring only authorised users can access the portal and make changes.

With live and historical data at their fingertips, engineers can make dosing adjustments 24/7 to help maintain safe water conditions, making SekoWeb ideal for management of professional installations.



### Main features

- Available on all iOS or Android-compatible smart devices
- Accessible via online login or by scanning a product's QR code
- Full access to all settings and parameters from any location
- Connect instantly to multiple installations
- Unprecedented insight into operating costs
- Track chemical consumption and account for every drop
- Adjust programmes on the move
- Comprehensive access to alarm reporting
- Unrestricted data analysis
- Map geolocation



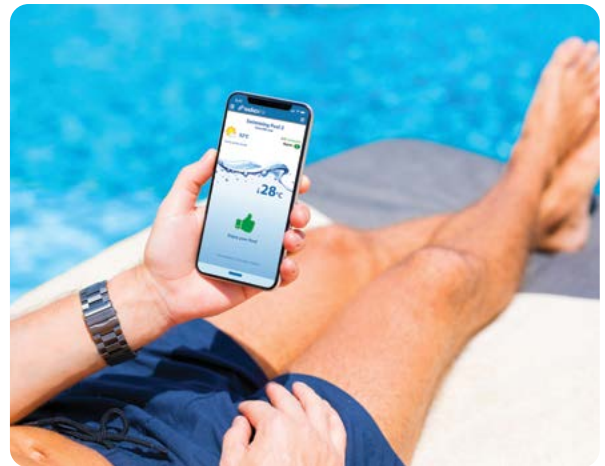
**Icon Key**  
Products compatible with SekoWeb



## The smart solution for remote dosing pump monitoring

Designed for the end user, SekoLink is an intuitive smartphone app that grants users quick and easy access to key water-quality parameters for their pool or spa.

SekoLink allows users to start or pause their dosing system and to check the health of their installation from any location via an iPhone or Android smart device, allowing defects to be identified immediately so that issues can be quickly rectified.



### Main features

- Remote access via smartphone
- Connect to multiple installations
- Start or pause dosing system
- Complete parameter monitoring
- Pool health updates
- For professional and domestic pools and spas
- Accessible by all

### Connectivity and users

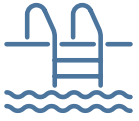
- Monitoring and limited management
- Smartphone app compatible with iPhone or Android
- Designed specifically for end users



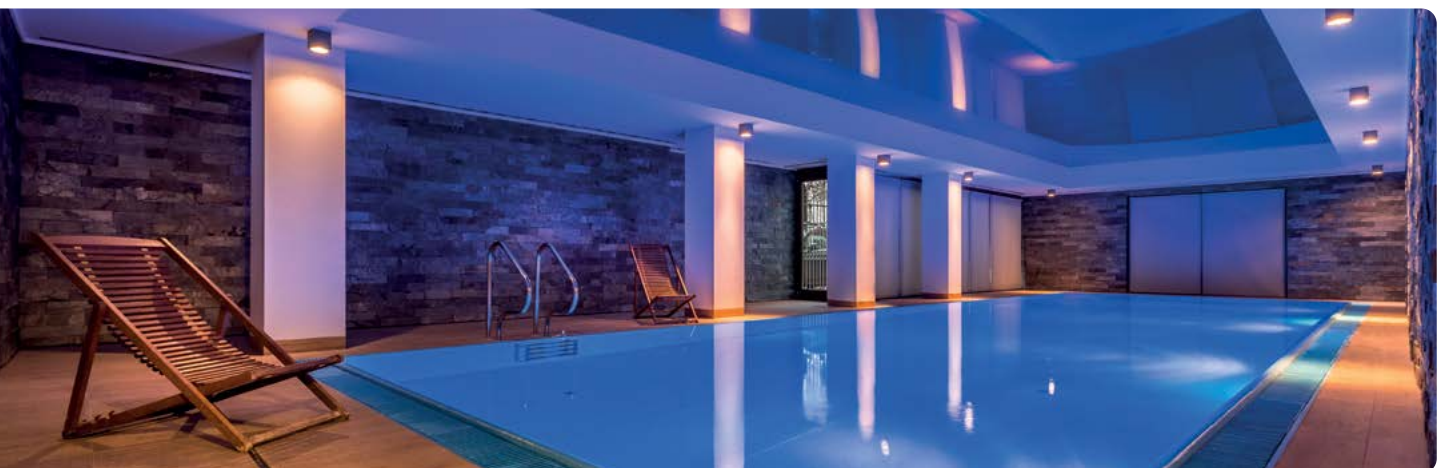
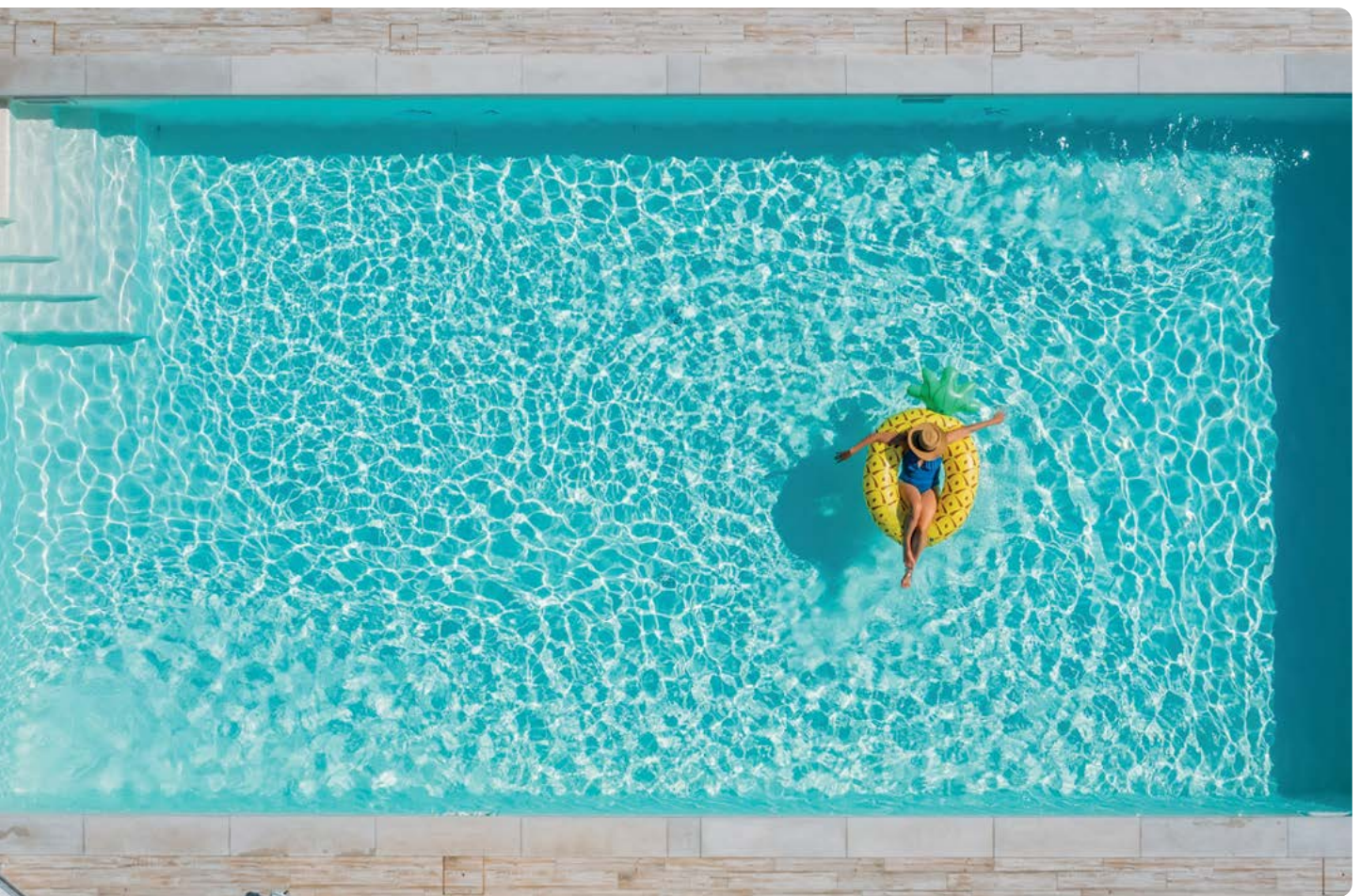
**Icon Key**  
Products compatible with SekoLink







# Equipment for **Residential Pools & Spas**



# Product overview



## PoolOne Range

Pool size	Indoor 3 – 300 m <sup>3</sup> Outdoor 3 – 260 m <sup>3</sup>
Flow rate	150 ml/h – 5 l/h
Pressure	1.5 bar
Measurements	pH, ORP



## PoolDose Range



Pool size	Indoor 5 – 130 m <sup>3</sup> Outdoor 5 – 110 m <sup>3</sup>
Flow rate	1.5 l/h
Pressure	1.5 bar
Measurements	pH, ORP, CL



## KemiDose Range



Pool size	Indoor 50 – 350 m <sup>3</sup> Outdoor 50 – 300 m <sup>3</sup>
Flow rate	5 l/h
Pressure	5 bar
Measurements	pH, ORP, CL



## PoolDose Double Spa

Pool size	Indoor 1 – 25 m <sup>3</sup> Outdoor 1 – 20 m <sup>3</sup>
Flow rate	0.4 l/h
Pressure	1.5 bar
Measurements	pH, ORP



## PoolDose Panels



Pool size	Indoor 5 – 300 m <sup>3</sup> Outdoor 5 – 250 m <sup>3</sup>
Flow rate	1.5 - 4 l/h
Pressure	1.5 bar
Measurements	pH, ORP, CL





# Equipment for Residential Pools & Spas

Peristaltic or solenoid-driven dosing systems with built-in controllers for single, double or multi-parameter measurement

These combined systems, including peristaltic pumps, solenoid-driven dosing pumps and controllers, automatically measure and verify pool water values. Systems for residential applications have been specially designed so they do not require the presence of technical personnel.

## Single pump for pH or ORP measurement

SEKO's principal offering for the residential pool market provides a user-friendly combination of products consisting of controllers and integrated proportional dosing pumps. The end user can adjust pH and chlorine values as required.

## Dual dosing pumps for multi-parameter measurement

SEKO has developed new advanced combined systems for the hotel and spa markets, featuring amperometric chlorine measurement to ensure full compliance with most local legislation.

## Installation kit (included)

- pH and ORP probes, amperometric chlorine cell
- By-pass and pressurised probe holder
- pH and ORP buffer solutions
- DN50 saddle clamp
- Brass brush
- 5" filter with 80 µm cartridge
- Ceramic foot filter and FPM non-return valve
- 4x6 and 8x12 PVC and PE tubes





# PoolOne

User-friendly analogue or digital combined system with a peristaltic dosing pump and single measurement, enabling automatic dosing and chemical adjustment for above-ground pools.

## PoolOne CS - 1.5 l/h

Fixed constant dosing

Flow rate	1.5 l/h
Pressure	1.5 bar
Pool size	<b>Indoor</b> 5–130 m <sup>3</sup> <b>Outdoor</b> 5–110 m <sup>3</sup>

## PoolOne CS - 5 l/h

Fixed constant dosing

Flow rate	5 l/h
Pressure	1.5 bar
Pool size	<b>Indoor</b> 50–300 m <sup>3</sup> <b>Outdoor</b> 50–260 m <sup>3</sup>

## PoolOne RG - 4 l/h

Adjustable constant dosing

Flow rate	1.3 - 4 l/h
Pressure	1.5 bar
Pool size	<b>Indoor</b> 50–250 m <sup>3</sup> <b>Outdoor</b> 50–200 m <sup>3</sup>

## IP65 Enclosure

Dimensions	85 x 134 x 118 mm (L x H x D)
Material	ABS



PoolOne CS

PoolOne RG

## Features

- PoolOne CS with constant basic dosing method
- PoolOne RG with knob-controlled flow rate regulation
- Galvanic electrical insulation
- Three PVDF rollers and Santoprene tubing
- Installation kit included

## Main Board

Power supply	220 Vac, 50/60Hz
--------------	------------------

## PoolOne RG-Plus

Digital peristaltic pump with constant dosing method and digital flow rate regulation.

### PoolOne RG-Plus - 150 ml/h

Flow rate	150 ml/h
Pressure	1.5 bar
Pool size	Indoor 3 – 40 m <sup>3</sup> Outdoor 3 – 35 m <sup>3</sup>

### IP65 Enclosure

Dimensions	85 x 134 x 118 mm (L x H x D)
Material	ABS

### Main Board

LED display	7 segments
Power supply	220 Vac, 50/60Hz



### Features

- Digital flow rate regulation between 10% - 100%
- Galvanic electrical insulation
- Three PVDF rollers and Santoprene tubing
- Installation kit included
- Circulation pump checks "Power On" flow trigger

## PoolOne pH or ORP

Digital peristaltic pump with constant dosing method and built-in pH or ORP (Redox) control to adjust chemical parameters for above-ground pools.

### PoolOne - pH

pH (3.8 – 8.2)

### PoolOne - ORP

ORP (400 – 999 mV)

Flow rate	1.5 l/h
Pressure	1.5 bar
Pool size	Indoor 5 – 130 m <sup>3</sup> Outdoor 5 – 110 m <sup>3</sup>

### IP65 Enclosure

Dimensions	85 x 134 x 118 mm (L x H x D)
Material	ABS

### Main Board

LED display	7 segments
Power supply	220 Vac, 50/60Hz



### Features

- Galvanic electrical and measure insulation
- Three PVDF rollers and Santoprene tubing
- Installation kit included
- Wizard probe calibration and degree of health
- Constant dosing method
- No technical skill required



# PoolDose pH or ORP system



PoolDose delivers a user-friendly solution, combining a peristaltic dosing pump and single measurement with automatic proportional dosing to adjust chemical parameters for above-ground pools, indoor and outdoor pools.

## PoolDose Single - pH

pH (0 - 14)

## PoolDose Single - ORP

ORP (0 - 1,000 mV)

Flow rate	1.5 l/h
Pressure	1.5 bar
Pool size	Indoor 5-130 m <sup>3</sup> Outdoor 5-110 m <sup>3</sup>



## IP65 Enclosure

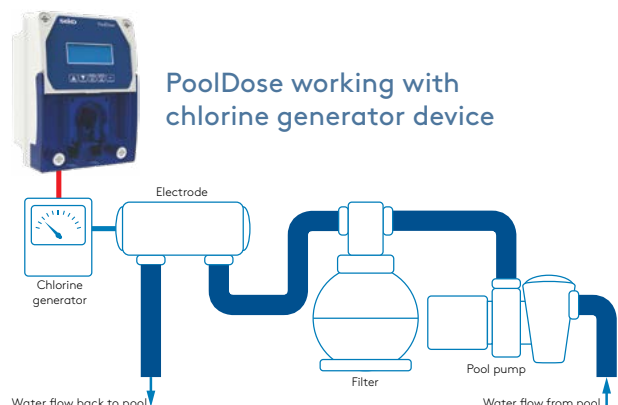
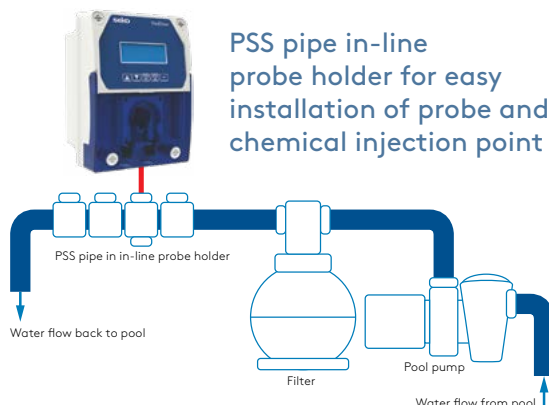
Dimensions	126 x 244 x 165 mm (L x H x D)
Material	ABS

## Main Board

Alphanumeric display	16 characters x 2 lines
Power supply	220 Vac, 50/60Hz

## Features

- PSS pipe in-line probe holder for easy installation of probe and chemical injection point (accessory not included)
- Easily connect device to the app by scanning a QR code
- Wi-Fi module enables pool management via app
- Galvanic electrical and measure insulation
- Three PVDF rollers and Santoprene tubing
- Internal relay enables chlorine generator management
- Water meter flow rate input totalises swimming pool water changes
- Multi-language menu
- Wizard probe calibration and degree of health
- No technical skill required
- Circulation pump checks "Power On" flow trigger
- Input level probe checks product levels
- Proportional dosing TWM (time width modulation) mode
- Input temperature probe range 0 - 50°C for measure compensation only
- Installation kit included



# PoolDose Double



Offering the fullest range of measurements alongside user-friendly operation, PoolDose Double combines two peristaltic dosing pumps, multi-measurement capability and automatic proportional dosing to deliver the ideal solution for above-ground, indoor and outdoor pools.

## PoolDose Double - pH-ORP

**Parameters:** pH (0 – 14) and ORP (0 – 1,000 mV)

## PoolDose Double - pH-ORP-CL

**Parameters:** pH (0 – 14), ORP (0 – 1,000 mV) and free chlorine (0 – 5 ppm)

Flow rate	1.5 l/h
Pressure	1.5 bar
Pool size	Indoor 5–130 m <sup>3</sup> Outdoor 5–110 m <sup>3</sup>

## IP65 Enclosure

Dimensions	205 x 194 x 133 mm (L x H x D)
Material	ABS

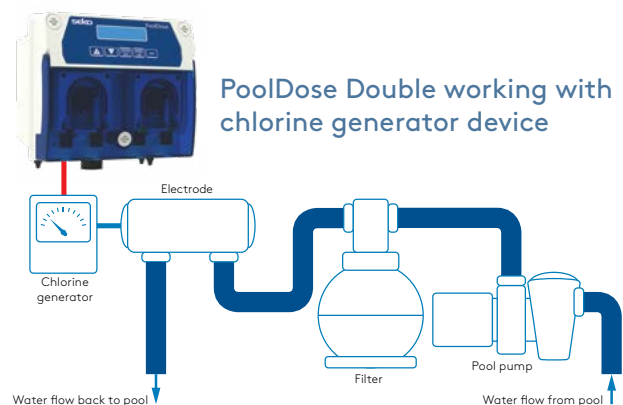
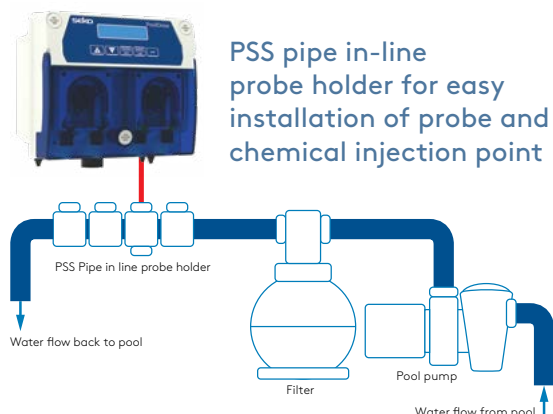


## Main Board

Alphanumeric display	16 characters x 2 lines
Power supply	220 Vac, 50/60Hz

## Features

- PSS pipe in-line probe holder for easy installation of probe and chemical injection point (accessory not included)
- Easily connect device to the app by scanning a QR code
- Wi-Fi module enables pool management via app
- Galvanic electrical and measure insulation
- Three PVDF rollers and Santoprene tubing
- Internal relay enables chlorine generator management
- Water meter flow rate input totalises swimming pool water changes
- Amperometric probe includes high-grade insulation
- Probe holder with amperometric chlorine probe included in pH, ORP and CL versions
- Installation kit included
- Multi-language menu
- Wizard probe calibration and degree of health
- No technical skill required
- Circulation pump checks “Power On” flow trigger
- Input temperature probe range 0 - 50°C for measure compensation only
- Input level probe checks product levels
- pH and chlorine relay enables extra dosing
- Proportional dosing TWM (time width modulation) mode





# KemiDose Double



Designed for larger pools, KemiDose Double combines two solenoid-driven dosing pumps with multi-measurement capability and an automatic proportional dosing system to deliver balanced chemical parameters for above-ground, indoor and outdoor pools.

## KemiDose Double - pH-ORP

Parameters: pH (0 – 14) and ORP (0 – 1,000 mV)

## KemiDose Double - pH-ORP-CL

Parameters: pH (0 – 14), ORP (0 – 1,000 mV) and free chlorine (0 – 5 ppm)



Flow rate	5 l/h
Pressure	5 bar
Pool size	Indoor 50 – 350 m <sup>3</sup> Outdoor 50 – 300 m <sup>3</sup>

## IP65 Enclosure

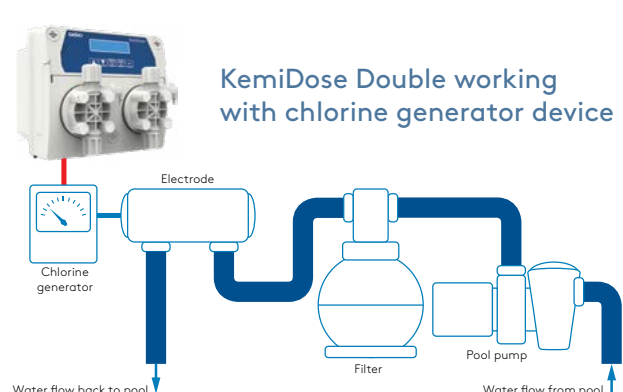
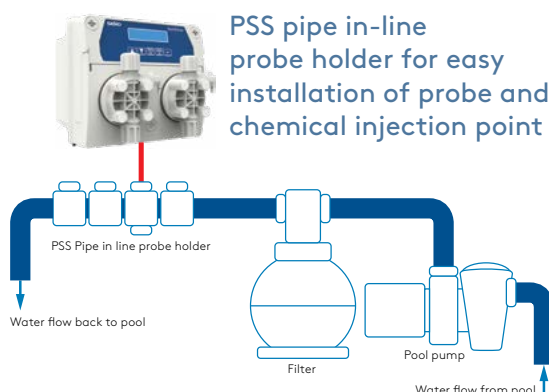
Dimensions	205 x 194 x 133 mm (L x H x D)
Material	ABS

## Main Board

Alphanumeric display	16 characters x 2 lines
Power supply	220 Vac, 50/60Hz

## Features

- PSS pipe in-line probe holder for easy installation of probe and chemical injection point (accessory not included)
- Easily connect device to the app by scanning a QR code
- Wi-Fi module enables pool management via app
- Galvanic electrical and measure insulation
- Internal relay enables chlorine generator management
- Water meter flow rate input totalises swimming pool water changes
- Amperometric probe include high-grade insulation
- Solenoid dosing pump with PVDF pump head, FPM gasket and ceramic ball
- Installation kit included
- Multi-language menu
- Wizard probe calibration and degree of health
- No technical skill required
- Circulation pump checks “Power On” flow trigger
- Input level probe checks product levels
- Relay alarm remote
- Proportional dosing FWM (frequency width modulation) mode
- Probe holder with amperometric chlorine probe included in pH, ORP and CL versions
- Input temperature probe range 0 – 50°C for measure compensation only





## Equipment for Spa pool and saunas

Where spa pool and sauna operators must maintain excellent water quality in low-volume applications, SEKO's user-friendly pump systems provide precise, consistent dosing across an extensive lifespan for both indoor and outdoor facilities.

With a constant turnover of users within a low volume of water, spa pools and saunas are at high risk of contamination, why is why SEKO's chemical injection solutions are valued by discerning operators looking to protect water quality and guests alike.

- Connect with your system 24/7 via the SekoWeb smartphone app and online portal for live and historical data on demand
- Measure and manage essential water-quality parameters such as pH, ORP and chlorine via intuitive interfaces
- Dedicated systems for indoor and outdoor spa pool facilities sized from 1 m<sup>3</sup> to 25 m<sup>3</sup>
- State-of-the-art peristaltic dosing ensures superior accuracy and repeatability
- Robust construction and minimal maintenance requirement deliver reliable performance





# PoolDose Double Spa

Designed specifically for spa pools, the user-friendly PoolDose Double Spa combines two peristaltic dosing pumps, multi-measurement capability and automatic proportional dosing.



## PoolDose Double Spa - pH-ORP

**Parameters:** pH (0 – 14) and ORP (0 – 1,000 mV)

Flow rate	0.4 l/h
Pressure	1.5 bar
Pool size	Indoor 1–25 m <sup>3</sup> Outdoor 1–20 m <sup>3</sup>

## IP65 Enclosure

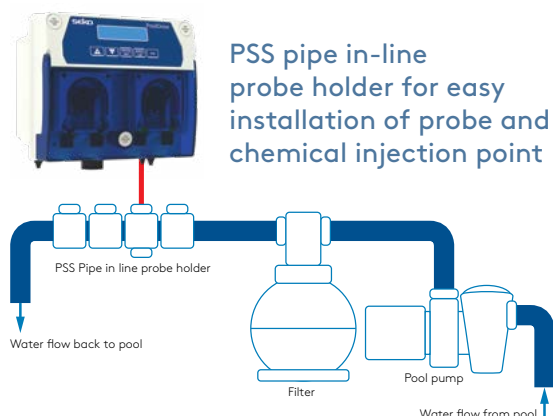
Dimensions	205 x 194 x 133 mm (L x H x D)
Material	ABS

## Main Board

Alphanumeric display	16 characters x 2 lines
Power supply	220 Vac, 50/60Hz

### Features

- Dedicated proportional dosing cycle mode for spa pools with less than 10 m<sup>3</sup> volume
- Cycle dosing mode designed specifically for small spa pools
- PSS pipe in-line probe holder for easy installation of probe and chemical injection point (accessory not included)
- Easily connect device to the app by scanning a QR code
- Wi-Fi module enables pool management via app
- Galvanic electrical and measure insulation
- Microdosing method for spa application
- pH regulation takes priority over chlorine to maintain a balanced and clinically disinfected environment
- Internal relay enables chlorine generator device management
- Water meter flow rate input totalises spa pool water changes
- Installation kit included
- Multi-language menu
- Wizard probe calibration and degree of health
- No technical skill required
- Circulation pump checks "Power On" flow trigger
- Input temperature probe range 0 - 50°C for measure compensation only
- Three PVDF rollers and Santoprene tubing
- Input level probe checks product levels
- Proportional dosing TWM (time width modulation) mode





## Pre-assembled panels for **Residential Pools & Spas**

Allowing monitoring and management of pH, ORP and chlorine, these pre-constructed units combine multiple elements such as dosing pumps and probe holders in a single panel for ease of installation in indoor and outdoor applications up to 300 m<sup>3</sup>.

- Connect with your system 24/7 via the SekoWeb smartphone app and online portal for live and historical data on demand
- Measure and manage essential water-quality parameters such as pH, ORP and chlorine via intuitive interfaces
- Dedicated systems for indoor and outdoor spa pool facilities sized from 5 m<sup>3</sup> to 300 m<sup>3</sup>
- Multi-language menus and remote alarm relays provide ease of use for every operator
- Peristaltic pump-driven dosing ensures exceptional accuracy and repeatability
- Robust construction and minimal maintenance requirement deliver reliable performance



## PoolDose Panel

PoolDose Panel is a user-friendly solution for the simple, hassle-free management of residential swimming pools up to 130 m<sup>3</sup>. Combining high-quality products assembled within a minimal footprint, PoolDose Panel provides flexibility and fast installation courtesy of a carefully designed layout.

This fully integrated system requires no technical skill to use and makes setting parameters easier than ever before, while a multi-language menu and remote alarm relay further simplify operation. This PoolDose Panel model comes complete with a PPS8 probe, by-pass probe holder, washable cartridge filter and PoolDose pH-ORP persaltic dosing unit.

### PoolDose Panel - pH-ORP

Parameters: pH (0 – 14) and ORP (0 – 1,000 mV)

Flow rate	1.5 l/h
Pressure	1.5 bar
Pool size	Indoor 5–130 m <sup>3</sup> Outdoor 5–110 m <sup>3</sup>

### IP65 Enclosure

Dimensions	582 x 440 x 140 mm (L x H x D)
Material	PP



### Main Board

Alphanumeric display	16 characters x 2 lines
Power supply	220 Vac, 50/60Hz
Temperature probe	PT100 pre-assembled

### Features

- Easily connect device to SekoWeb app by scanning a QR code
- Wi-Fi module enables pool management via SekoWeb
- Galvanic electrical and measure insulation
- Three PVDF rollers and Santoprene tubing
- Internal relay enables chlorine generator management
- Water meter flow rate input totalises swimming pool water changes
- Installation kit included
- Multi-language menu
- Wizard probe calibration and degree of health
- No technical skill required
- Circulation pump checks "Power On" flow trigger
- Input temperature probe range 0 - 50°C for measure compensation only
- Input level probe checks product levels
- pH and chlorine relay enables extra dosing
- Proportional dosing TWM (time width modulation) mode



## **NEW** PoolDose Panel

PoolDose Panel is a user-friendly solution for the simple, hassle-free management of residential swimming pools up to 130 m<sup>3</sup>. Combining high-quality products assembled within a minimal footprint, PoolDose Panel provides flexibility and fast installation courtesy of a carefully designed layout.

This fully integrated system requires no technical skill to use and makes setting parameters easier than ever before, while a multi-language menu and remote alarm relay further simplify operation. This PoolDose Panel model comes complete with a PSS-plexi probe holder, washable cartridge filter and PoolDose pH-ORP-chlorine persaltic dosing unit.

### PoolDose Panel - pH-ORP-CL

**Parameters:** pH (0 – 14), ORP (0 – 1,000mV) and free chlorine (0 – 5 ppm)

Flow rate	1.5 l/h
Pressure	1.5 bar
Pool size	Indoor 5 – 130 m <sup>3</sup> Outdoor 5 – 110 m <sup>3</sup>

### IP65 Enclosure

Dimensions	700 x 420 x 140 mm (L x H x D)
Material	PP



### Main Board

Alphanumeric display	16 characters x 2 lines
Power supply	220 Vac, 50/60Hz
Temperature probe	PT100 pre-assembled

### Features

- **New** - Probe holder with amperometric chlorine probe included in pH, ORP and CL versions
- Easily connect device to SekoWeb app by scanning a QR code
- Wi-Fi module enables pool management via SekoWeb
- Galvanic electrical and measure insulation
- Three PVDF rollers and Santoprene tubing
- Internal relay enables chlorine generator management
- Water meter flow rate input totalises swimming pool water changes
- Chlorine amperometric probe includes high-grade insulation
- Installation kit included
- Multi-language menu
- Wizard probe calibration and degree of health
- No technical skill required
- Circulation pump checks "Power On" flow trigger
- Input temperature probe range 0 - 50°C for measure compensation only
- Input level probe checks product levels
- pH and chlorine relay enables extra dosing
- Proportional dosing TWM (time width modulation) mode

## PoolDose Tech Panel



PoolDose Tech Panel is a user-friendly solution for the simple, hassle-free management of swimming pools up to 300 m<sup>3</sup>. Combining high-quality products assembled within a minimal footprint, PoolDose Panel provides flexibility and fast installation courtesy of a carefully designed layout.

This fully integrated system requires no technical skill to use and makes setting parameters easier than ever before, while a multi-language menu and remote alarm relay further simplify operation. PoolDose Tech Panel model comes complete with a PSS-plexi probe holder, washable cartridge filter and PoolDose pH-ORP-chlorine persaltic dosing unit.



### PoolDose Tech Panel - pH-ORP-CL

**Parameters:** pH (0 – 14), ORP (0 – 1,000mV) and free chlorine (0 – 10 ppm)

Flow rate	4 l/h
Pressure	1.5 bar
Pool size	Indoor 60 – 300 m <sup>3</sup> Outdoor 50 – 250 m <sup>3</sup>

### IP65 Enclosure

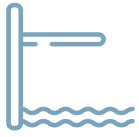
Dimensions	700 x 420 x 140 mm (L x H x D)
Material	PP

### Main Board

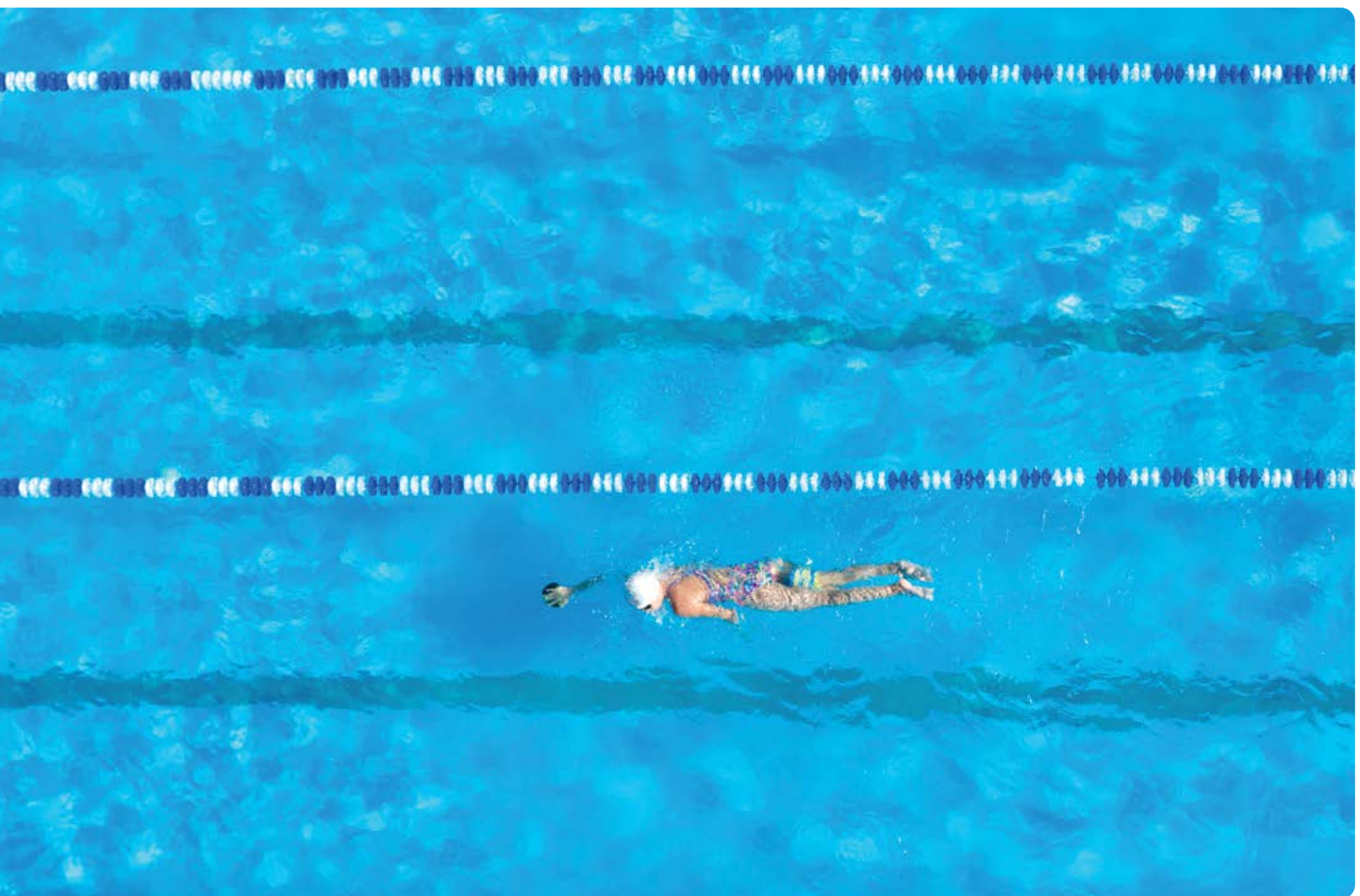
Graphic display	128 x 128 pixels
Power supply	220 Vac, 50/60Hz
Temperature probe	PT100 pre-assembled

### Features

- **New** - Probe holder with membrane chlorine probe included in pH, ORP and CL versions
- Easily connect device to SekoWeb app by scanning a QR code
- Wi-Fi module enables pool management via SekoWeb
- Galvanic electrical and measure insulation
- Three PVDF rollers and Santoprene tubing
- Internal relay enables chlorine generator management
- Water meter flow rate input totalises swimming pool water changes
- Chlorine membrane probe includes high-grade insulation
- Installation kit included
- Multi-language menu
- Wizard probe calibration and degree of health
- No technical skill required
- Circulation pump checks "Power On" flow trigger
- Input temperature probe range 0 - 50°C for measure compensation only
- Input level probe checks product levels
- pH and chlorine relay enables extra dosing
- Proportional dosing TWM (time width modulation) mode



# Equipment for **Professional Pools**





# Product overview



## Photometer Range



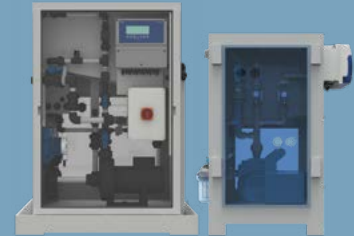
Pool size	Professional
Measurements	pH, ORP, CL



## Kontrol Guard & Panel Range



Pool size	Indoor 50 – 1,500 m <sup>3</sup> Outdoor 50 – 1,200 m <sup>3</sup> Professional
Flow rate	8 – 110 l/h
Pressure	1 – 2 bar
Measurements	pH, ORP, CL, TR



## PoolFeeder XL, L & M



Pool size	Indoor 900 – 2,200 m <sup>3</sup> Outdoor 850 – 2,100 m <sup>3</sup> Professional
Chlorine tablet tank capacity	10 - 30kg



## KommBox



Pool size	Professional
Features	Communication hub to cloud server via SekoWeb portal



## KommSpot



Pool size	Professional
Features	Easily connect device to SekoWeb by scanning a QR code



## Dosing Pump Range



Pool size	Indoor 50 – 9,000 m <sup>3</sup> Outdoor 50 – 7,000 m <sup>3</sup>
Flow rate	5 – 330 l/h
Pressure	1 – 10 bar



## Controller Range



Pool size	Professional
Measurements	pH, ORP, CL, TR, Flow Rate, Conductivity



## Side Channel Blowers



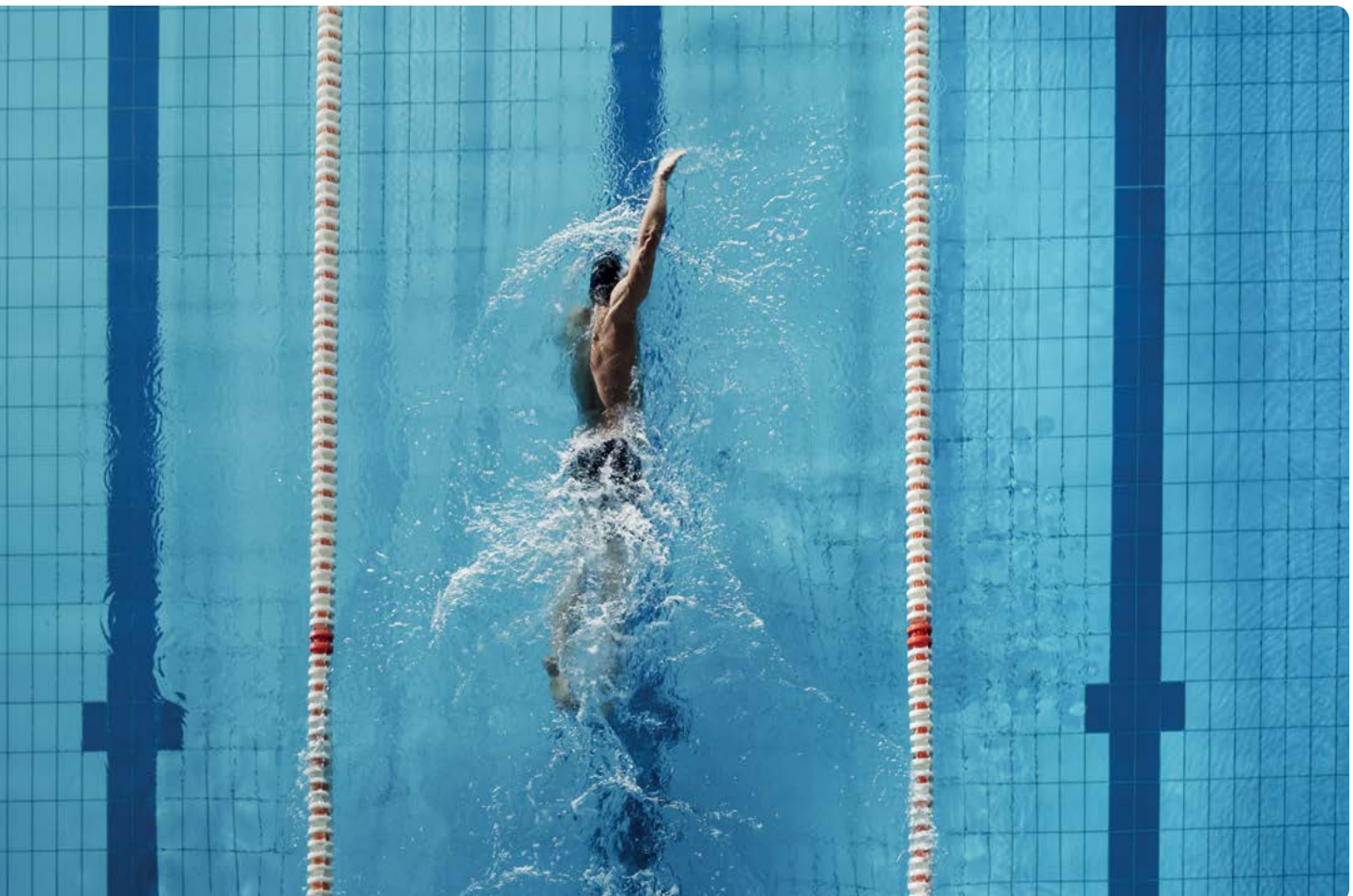
Pool size	Professional
Flow rate	145 – 900 m <sup>3</sup> /h
Pressure	200 – 370 mbar

# Equipment for Professional Pools

SEKO combines a wealth of experience in water treatment and swimming pool dosing to offer a new solution with our high-performance assembled control systems

These systems feature a complete cabinet or panel station including the necessary hydraulic parts, electronic controller unit and dosing pumps to provide a simple “plug and play” functionality. These solutions for professional swimming pools include:

- The Photometer and Pool Photometer systems are professional controllers that check free, total and combined chlorine in the water, delivering perfect results every time thanks to their use of the DPD analysis method.
- The Kontrol Guard and Kontrol 800 panels are the most advanced models in the SEKO range of controllers, providing complete and superior systems for controlling large, complex pool systems.
- KommBox is a device that can be physically connected to all SEKO equipment provided with Modbus serial ports and accessible via the web. Once configured and installed, the devices can be accessed directly via the dedicated SekoWeb portal from anywhere in the world by users with the appropriate credentials.
- A complete range of, solenoid-driven and motor-driven dosing pumps, control instruments and blower systems.



# Pool Photometer



The SEKO Pool Photometer is a user-friendly multi-parameter controller combined with a sampler dedicated to chlorine measurement.

## Pool Photometer - pH-ORP-CL

Parameters: pH (0 – 14), ORP (0 – ±1,500mV) and free chlorine (0 – 5 ppm)

### DPD Pump

Peristaltic pump	1 mechanical support
Silicone tube	3 x 5 mm
Flow rate	0.07 cc sample measure back pressure
DPD chemical	1 litre 48 days at 5-minute period sample
Pool size	Professional

### IP65 Enclosure

Dimensions	276 x 514 x 126.5 mm (L x H x D)
Material	ABS

### Main Board

Graphic display	64 x 128 pixel with backlight
Power supply	100 – 240 Vac, 50/60Hz



## Features

- KommBox or KommSpot gateway devices enables access to SekoWeb
- Galvanic electrical and measure insulation
- Installation kit included
- Multi-language menu
- Professional parameter setting
- Technical skill required
- Remote alarm relay
- Wizard probe calibration and degree of health
- Proportional dosing mode
- Hydraulic chamber measure for closed loop and water drain dedicated to chemical reagents used during chlorine measurement
- Display provides historical graphical reports for each measure courtesy of built-in data logger



# Photometer Systems

SEKO Photometer Systems combine 6-parameter controllers with a sampler dedicated to chlorine measurement.



## Photometer System - pH-CL

Parameters: pH (0 – 14) and free chlorine (0 – 5 ppm)

## Photometer System - pH-ORP-CL

Parameters: pH (0 – 14), ORP (0 – ±1,500mV) and free chlorine (0 – 5 ppm)

## Photometer System - pH-ORP-Free/Total/Combine Chlorine

Parameters: pH (0 – 14), ORP (0 – ±1,500mV) and free, total and combined chlorine (0 – 5 ppm)

## DPD Pump

Peristaltic pump	with two rollers
Silicone tube	3 x 5 mm
Flow rate	0.15 cc sample measure back pressure
DPD chemical	1 litre 24 days at 5-minute period sample
Pool size	Professional

## IP65 Enclosure

Dimensions	598 x 601 x 190 mm (L x H x D)
Material	ABS



## Main Board

Graphic display	240 x 128 pixel with backlight
Power supply	100 – 240 Vac, 50/60Hz

## Features

- KommBox or KommSpot gateway devices enables access to SekoWeb
- Galvanic electrical and measure insulation
- Installation kit included
- Multi-language menu
- Professional parameter setting
- Technical skill required
- Remote alarm relay
- Wizard probe calibration and degree of health
- Proportional dosing mode
- Hydraulic chamber measure for open loop and water drain dedicated to chemical reagents used during chlorine measurement
- Display provides historical graphical reports for each measure courtesy of built-in data logger

# Kontrol Guard Fort



SEKO's experience in the residential and commercial swimming pool sector means our systems help guarantee perfect water conditions, ensuring the satisfaction of bathers and operators alike. Kontrol Guard Fort is a dedicated multi-parameter controller that activates dosing pumps using a proportional dosing method to overcome challenges encountered in swimming pool applications.

## Kontrol Guard Fort - AKL603

Parameters: pH (0 – 14) and free chlorine (0 – 5 ppm)

Flow rate	8 l/h
Pressure	2 bar
Pool size	Indoor 50 – 650 m <sup>3</sup> Outdoor 50 – 600 m <sup>3</sup>

## Kontrol Guard Fort - AKL800

Parameters: pH (0 – 14) and free chlorine (0 – 5 ppm)

Flow rate	18 l/h
Pressure	2 bar
Pool size	Indoor 110 – 900 m <sup>3</sup> Outdoor 100 – 850 m <sup>3</sup>

## Kontrol Guard Fort - AKL803

Parameters: pH (0 – 14) and free chlorine (0 – 5 ppm)

Flow rate	110 l/h
Pressure	1 bar
Pool size	Indoor 250 – 1,500 m <sup>3</sup> Outdoor 200 – 1,200 m <sup>3</sup>



## IP65 Enclosure

Dimensions	598 x 601 x 190 mm (L x H x D)
Material	ABS

## Main Board

Alphanumeric display	16 characters x 2 lines
Power supply	220 Vac, 50/60Hz

## Features

- KommBox or KommSpot gateway devices enables access to SekoWeb
- Amperometric probe including high-grade insulation
- Galvanic electrical and measure insulation
- Installation kit included
- Multi-language menu
- Professional parameter setting
- Technical skill required
- Remote alarm relay
- Wizard probe calibration and degree of health
- Proportional dosing mode
- Hydraulic chamber measure for closed or open loop
- Display provides historical graphical reports for each measure courtesy of built-in data logger

# Kontrol 800 Panel

A pre-assembled, panel-mounted system that manages and adjusts pH and chlorine levels with automatic proportional dosing for public pools.



## Kontrol 800 Panel - CL

Parameters: free chlorine (0 – 5 ppm)

## Kontrol 800 Panel - pH-CL

Parameters: pH (0 – 14) and free chlorine (0 – 5 ppm)

## Kontrol 800 Panel - pH-ORP-CL

Parameters: pH (0 – 14), ORP (0 – 2,000mV) and free chlorine (0 – 5 ppm)

## Kontrol 800 Panel - pH-ORP-Free/Total/Combine Chlorine

Parameters: pH (0 – 14), ORP (0 – 2,000mV) and free, total and combined chlorine (0 – 5 ppm)

## Kontrol 800 Panel - CL-Pot

Parameters: free chlorine potentiostatic probe (0 – 10 ppm)

## Kontrol 800 Panel - pH-CL-Pot

Parameters: pH (0 – 14) and free chlorine potentiostatic probe (0 – 10 ppm)

## Kontrol 800 Panel - pH-ORP-CL-Pot

Parameters: pH (0 – 14), ORP (0 – 2,000mV) and free chlorine potentiostatic probe (0 – 10 ppm)

Pool size	Professional
-----------	--------------



## IP65 Enclosure

Dimensions	700 x 420 x 140 mm (L x H x D)
Material	PP

## Main Board

Alphanumeric display	20 characters x 4 lines
Power supply	100 – 240 Vac, 50/60Hz

## Features

- KommBox or KommSpot gateway devices enables access to SekoWeb
- Amperometric and potentiostatic probes include high-grade insulation
- Galvanic electrical and measure insulation
- Installation kit included
- Multi-language menu
- Professional parameter setting
- Technical skill required
- Remote alarm relay
- Wizard probe calibration and degree of health
- Proportional dosing mode
- Hydraulic chamber measure for closed or open loop
- Alphanumeric display provides historical reports for each measure courtesy of built-in data logger



# Kontrol 800 Tech Panel



A pre-assembled, panel-mounted system that manages and adjusts pH and chlorine levels with automatic proportional dosing for public pools.

## Kontrol 800 Tech Panel - pH-ORP-CL

Parameters: pH (0 – 14), ORP (0 – 2,000mV) and free chlorine (0 – 5 ppm)

## Kontrol 800 Tech Panel - pH-ORP-CL-Pot-Free/Total/Combine Chlorine

Parameters: pH (0 – 14), ORP (0 – 2,000mV) and free, total and combined chlorine (0 – 5 ppm)

## Kontrol 800 Tech Panel - pH-CL-Pot

Parameters: pH (0 – 14) and free chlorine potentiostatic probe (0 – 10 ppm)

## Kontrol 800 Tech Panel - pH-ORP-CL-Pot

Parameters: pH (0 – 14), ORP (0 – 2,000mV) and free chlorine potentiostatic probe (0 – 10 ppm)

## Kontrol 800 Tech Panel - pH-ORP-CL-TB

Parameters: pH (0 – 14), ORP (0 – 2,000mV), free chlorine potentiostatic probe (0 – 10 ppm) and turbidity (0 – 10 NTU)



Pool size	Professional
-----------	--------------

## IP65 Enclosure

Dimensions	700 x 420 x 140 mm (L x H x D)
Material	PP

## Main Board

Graphic display	240 x 128 pixel with backlight
Power supply	100 – 240 Vac, 50/60Hz

## Features

- KommBox or KommSpot gateway devices enables access to SekoWeb
- Amperometric and potentiostatic probes include high-grade insulation
- Galvanic electrical and measure insulation
- Installation kit included
- Multi-language menu
- Professional parameter setting
- Technical skill required
- Remote alarm relay
- Wizard probe calibration and degree of health
- Proportional dosing mode
- Hydraulic chamber measure for closed or open loop
- Display provides historical graphical reports for each measure courtesy of built-in data logger

# KommBox

KommBox is a device that can be physically connected to all SEKO equipment provided with Modbus serial ports that are accessible via the web. Essentially, KommBox is a gateway that creates the interface between several Modbus devices and Wi-Fi or LAN – and therefore the web.

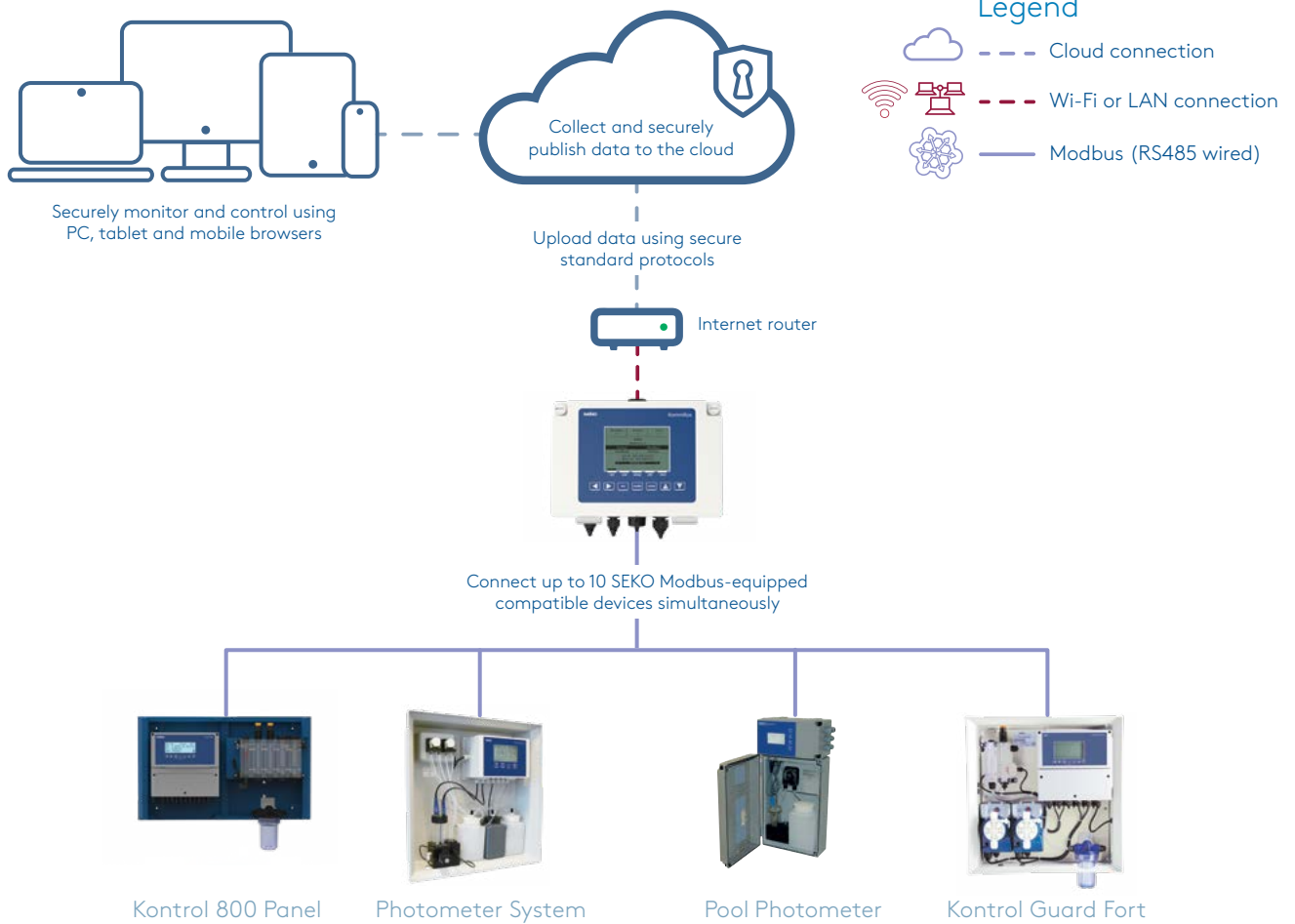
KommBox can be used via any available internet connection. Once configured and installed, the devices can be accessed directly from the dedicated SekoWeb portal, from any location, by users with the appropriate credentials.

KommBox features an intuitive wizard installation system for products as they are loaded, making the process quick, simple and straightforward. Once the products have been installed, they can be found in the portal itself.



## IP65 Enclosure

Dimensions	218 x 180.5 x 46 mm (L x H x D)
Material	ABS



**SekoWeb & Data on Demand**  
 Please refer to page 5 for information on SekoWeb

# KommSpot

The KommSpot system is a dedicated unit that connects to all web-accessible SEKO devices fitted with Modbus serial ports, creating a vital link between the equipment and Wi-Fi for internet access.

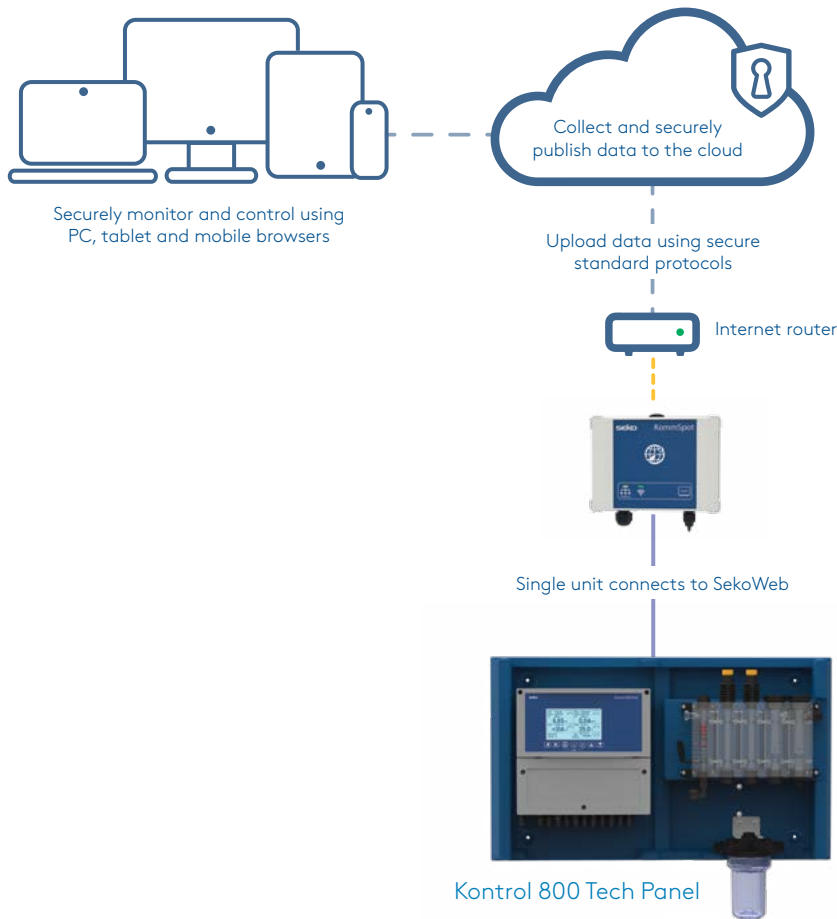
KommSpot is compatible with both the SekoWeb online portal and smartphone app for Apple and Android users and once installed and calibrated can be accessed by any authorised user.

KommSpot can be quickly and easily connected to the SekoWeb app by scanning a QR code, while an intuitive wizard installation system makes the process fast, simple and hassle-free. Once the product has been installed, users can locate it in the portal itself.



## IP65 Enclosure

Dimensions	140 x 110 x 60 mm (L x H x D)
Material	ABS





# PoolFeeder



## Chlorine tablet feeder for swimming pools

The PoolFeeder range is a series of all-in-one chlorine dosing solutions for sanitising commercial swimming pools, which connect to the SekoWeb app and online portal for 24/7 remote monitoring and programming. These versatile systems offer both manual and automatic control and are available in three models to cover every dosing need, from small spa pools to multiple installations within water parks.

Designed with safety in mind, PoolFeeder uses chlorine tablets which are dissolved at the point of dosing to avoid the pollution risks associated with storing liquid chlorine. Chlorine is dosed in intervals directly from an integrated tank, with the dissolved solution conveyed by a venturi nozzle to the pool water via a booster pump. PoolFeeder's unique dry tank function ensures the internal tank remains empty and dry once dosing is complete. Meanwhile, the system's integrated automatic washing system reduces maintenance requirement and manual cleaning frequency.



Model	PoolFeeder XL Multi Pool	PoolFeeder L	PoolFeeder M
Pool size	Indoor 2,200 m <sup>3</sup> Outdoor 2,100 m <sup>3</sup>	Indoor 1,800 m <sup>3</sup> Outdoor 1,700 m <sup>3</sup>	Indoor 900 m <sup>3</sup> Outdoor 850 m <sup>3</sup>
Tablet tank capacity	30 kg	20 kg	10 kg
Pool type	Multi pool	Single pool	Single pool
Material	Polypropylene		
Installation	Ground mounting		
Weight	180 kg	180 kg	60 kg
Front panel	UV-resistant polycarbonate		
Power supply	240 Vac, 50 - 60 Hz		
Power consumption	1.2 kW	1.2 kW	600 W

## PoolFeeder Dimensions

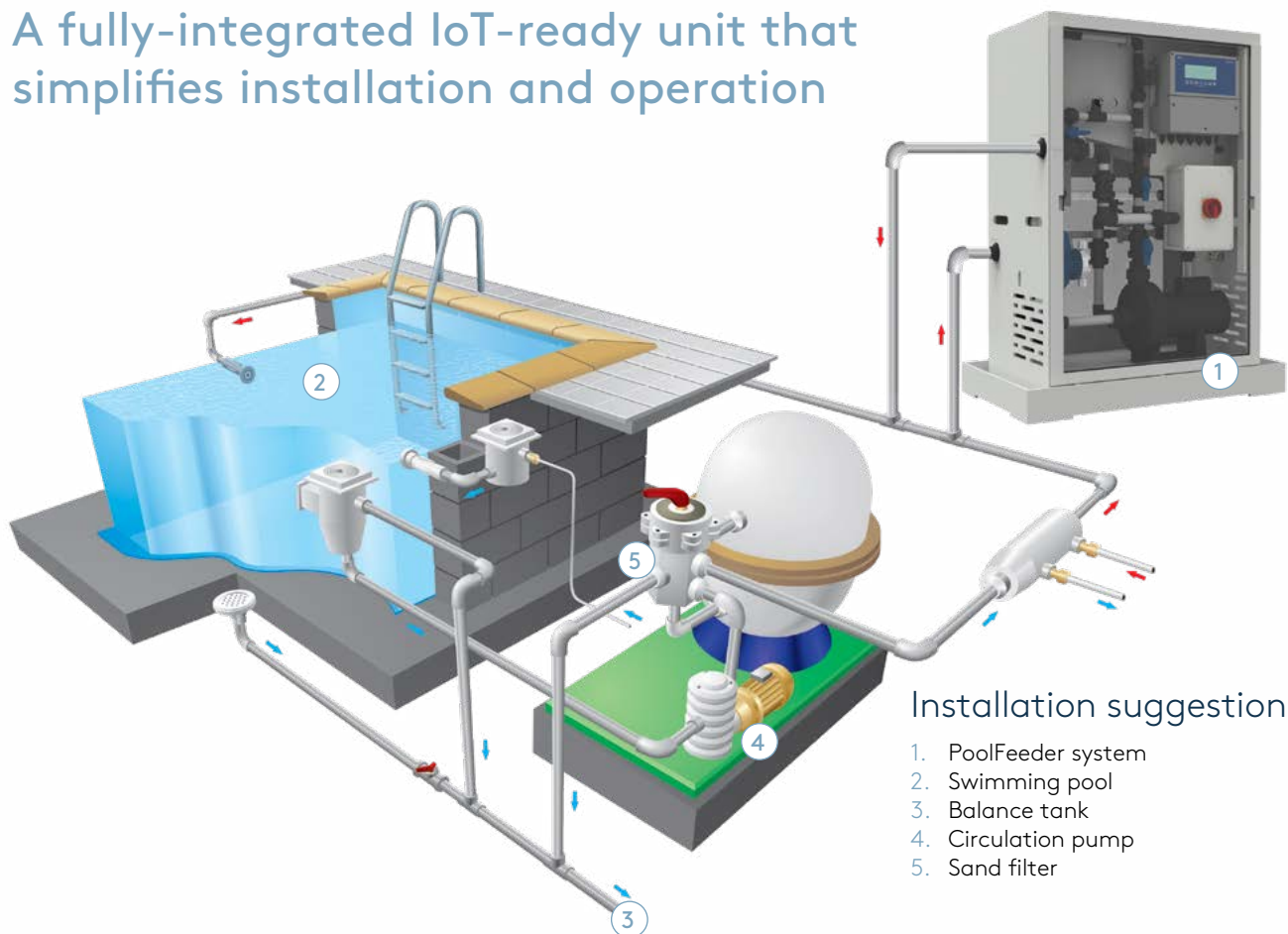


PoolFeeder XL & L



PoolFeeder M

# A fully-integrated IoT-ready unit that simplifies installation and operation



## Installation suggestion

1. PoolFeeder system
2. Swimming pool
3. Balance tank
4. Circulation pump
5. Sand filter

## Inlet/outlet tubes to connect to PoolFeeder XL and L

No	Nominal diameter	External diameter	Inlet (pipe length)	Outlet (pipe length)
1	DN 25mm	32mm	8m*	8m*
2	DN 32mm	40mm	34m*	34m*
3	DN 40mm	50mm	85m*	85m*

\* 1 Mathematic calculation value

## Inlet/outlet tubes to connect to PoolFeeder M

No	Nominal diameter	External diameter	Inlet (pipe length)	Outlet (pipe length)
1	DN 25mm	32mm	8m*	8m*
2	DN 32mm	40mm	34m*	34m*

\* 1 Mathematic calculation value



# PoolFeeder XL & L

Chlorine tablet feeder for single and multiple swimming pools



## Chlorine dosing

Liquid chlorine is prepared in the integrated dosing tank, diluted at 2.5% to moderate gas and odours.

## Web connection

Connection to SekoWeb portal via Kommbbox gateway device enables remote management 24/7 by PC or smartphone.

## Feeder tabs

Dosing station for calcium hypochlorite tablets in swimming pool water disinfection. Designed to serve pools up to 2,200 m<sup>3</sup>, the tank holds up to 30 kg of tablets and can be removed for deep cleaning.

## Dry tank function

A level sensor allows the feeder system to remove all chlorine liquid by venturi action.

## Multi-pool function

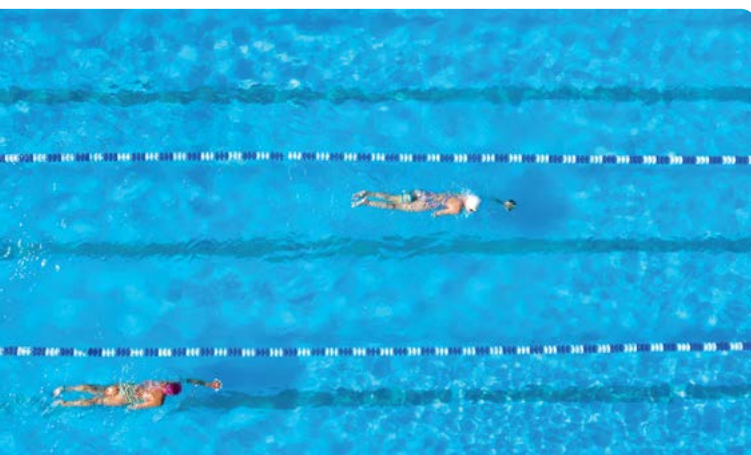
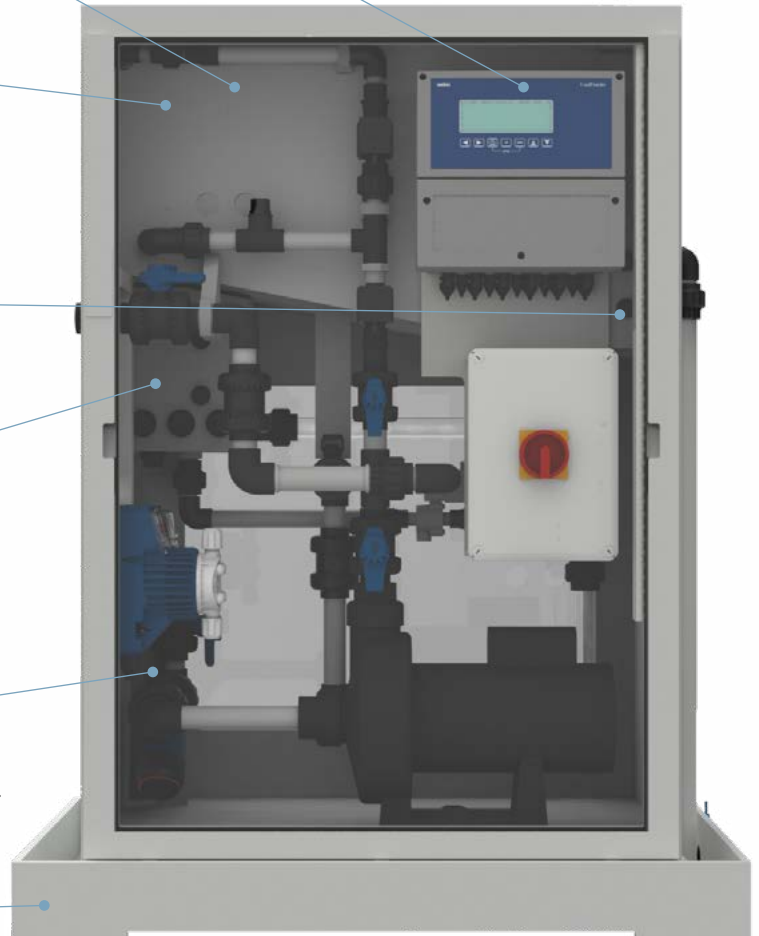
An additional in-built 5-litre tank connects to three external dosing pumps for multi-pool operation.

## Integrated washing system

An integrated washing system rinses the basket of the tablets after a programmable number of dosing cycles.

## Spill tray

Ensures any spillages are contained, keeping the floor clean and removing slip hazards.





# PoolFeeder M

Chlorine tablet feeder for single pools



## Feeder tabs

Dosing station for calcium hypochlorite tablets in swimming pool water disinfection. Designed to serve pools up to 900 m<sup>3</sup>, the tank holds 10 kg of tablets and can be removed for deep cleaning.

## Chlorine dosing

Liquid chlorine is prepared in the integrated dosing tank, diluted at 2.5% to moderate gas and odours.

## Integrated washing system

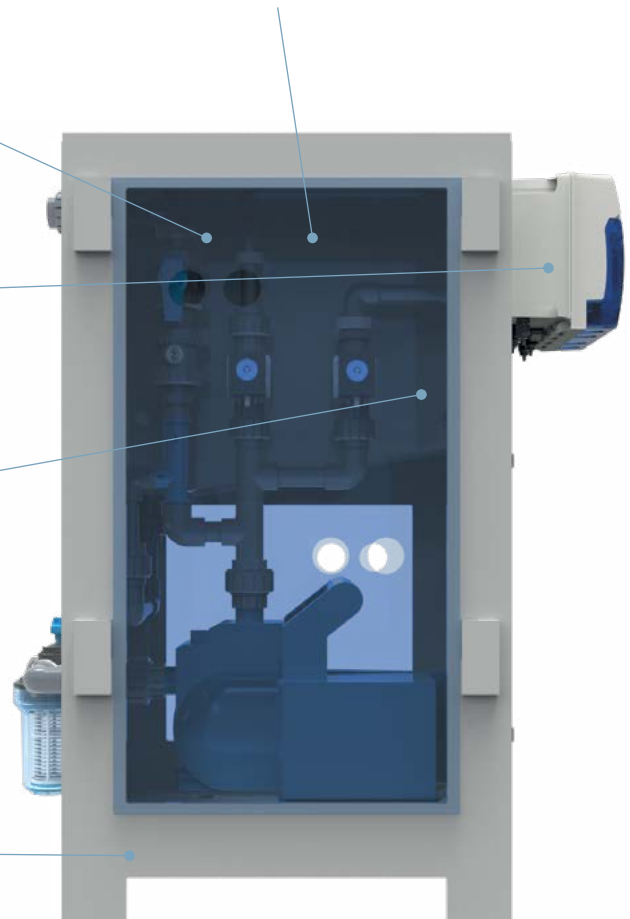
An integrated washing system rinses the basket of the tablets after a programmable number of dosing cycles.

## Dry tank function

A level sensor allows the feeder system to remove all chlorine liquid by venturi action.

## Spill tray

Ensures any spillages are contained, keeping the floor clean and removing slip hazards.



# Kompact

An advanced solenoid-driven dosing pump for medium-sized indoor and outdoor swimming pools, the microprocessor-based Kompact range features both constant and proportional flow rates. The intuitive Kompact has been designed with the user in mind, featuring a multi-language menu and wizard probe calibration.

## Kompact - 200

Flow rate	5 l/h
Pressure	8 bar
Pool size	Indoor 50 – 350 m <sup>3</sup> Outdoor 50 – 300 m <sup>3</sup>

## Models

AML	Constant dosing pump with input level probe
AMM	Proportional dosing pump connecting to an external analogue signal (4 – 20 mA)
DRP	Proportional dosing pump with pH/ORP controller instrument included

## IP65 Enclosure

Dimensions	90 x 190.5 x 135.5 mm (L x H x D)
Material	ABS



## Main Board

Alphanumeric display	8 characters x 2 lines
Power supply	100 - 240 Vac, 50/60Hz

## Features

- pH measure range: 0 – 14 pH
- ORP measure range: ±1,000 mV
- Galvanic electrical and measure insulation
- Installation kit included
- Multi-language menu
- Wizard probe calibration and degree of health
- Proportional dosing mode
- Solenoid dosing pump with PVDF pump head, FPM gasket and ceramic ball

# Tekna



For high-accuracy, consistent and reliable chemical dosing in swimming pool applications, SEKO's Tekna series of wall-mounted solenoid-driven dosing pumps represents a benchmark in versatility and performance. Comprising a range of cutting-edge diaphragm pumps, Tekna is the professionals' choice for maintaining precise chlorine levels within a swimming pool chemical-dosing system.

## Tekna - 603

Flow rate	8 l/h
Pressure	2 bar
Pool size	Indoor 50 – 650 m <sup>3</sup> Outdoor 50 – 600 m <sup>3</sup>

## Tekna - 800

Flow rate	18 l/h
Pressure	2 bar
Pool size	Indoor 110 – 900 m <sup>3</sup> Outdoor 100 – 850 m <sup>3</sup>

## Tekna - 803

Flow rate	110 l/h
Pressure	1 bar
Pool size	Indoor 250 – 1,500 m <sup>3</sup> Outdoor 200 – 1,200 m <sup>3</sup>

## Models

AKL	Constant dosing pump with input level probe
TPG	Proportional dosing pump connecting to an external analogue signal (4 – 20 mA)
TPR	Proportional dosing pump with pH/ORP controller instrument included
TCK	Constant dosing pump with weekly timer included



## IP65 Enclosure

Dimensions	119 x 231 x 146 mm (L x H x D)
Material	PP

## Main Board

Alphanumeric display	16 characters x 2 lines
Power supply	100 – 240 Vac, 50/60Hz

## Features

- The TPG and TPR models with Modbus can be managed online through the SekoWeb app when used in conjunction with KommBox or KommSpot
- pH measure range 0 – 14 pH
- ORP measure range  $\pm 1,500$  mV
- Galvanic electrical insulation
- PVDF pump head and ceramic ball
- Installation kit included
- Multi-language menu
- Wizard probe calibration and degree of health
- Proportional dosing mode
- Solenoid dosing pump with PVDF pump head, FPM gasket and ceramic ball



# Spring

Professional plunger motor-driven dosing pumps for large indoor and outdoor pools. Featuring a spring return mechanism in an aluminium housing, these pumps deliver robust, affordable and efficient power with flexibility in stroke length and motor speed which are separately controllable. Courtesy of mechanically actuated diaphragms, SEKO's Spring pumps can be used almost universally in low-pressure applications with the additional benefit of being a zero-leakage solution.

## Spring MS1 - B108C

Flow rate	120 l/h
Pressure	10 bar
Pool size	Indoor 250–1,600 m <sup>3</sup> Outdoor 200–1,300 m <sup>3</sup>

## Spring MS1 - C165B

Flow rate	330 l/h
Pressure	5 bar
Pool size	Indoor 750–9,000 m <sup>3</sup> Outdoor 600–7,000 m <sup>3</sup>

## IP65 Enclosure

Dimensions	406 x 396 x 295 mm (L x H x D)
Material	Stainless steel

## Main Board

Power supply	230 Vac or 400 Vac, 50/60Hz
--------------	-----------------------------



## Features

- Plunger motor-driven dosing pumps with PVC pump head, FPM gasket and ceramic ball
- MS1 pumps have a spring return mechanism in a single aluminium housing
- Supplied with a single or three-phase electric motor with IP55 protection

## Kontrol 40

Kontrol 40 is an entry-level single-measure controller specifically conceived to fit a wide range of individual processes, allowing accurate adjustments for less-complex swimming pool water-treatment applications.

### Kontrol 40 - pH

Parameters: pH (0 - 14)

### Kontrol 40 - ORP

Parameters: ORP ( $\pm 1,500$  mV)

Pool size	Professional
-----------	--------------

### IP65 Enclosure

Dimensions	144 x 144 x 105 mm (L x H x D)
------------	--------------------------------

Material	PP
----------	----

### Main Board

Alphanumeric display	16 characters x 2 lines
----------------------	-------------------------

Power supply	100 - 240 Vac, 50/60Hz
--------------	------------------------



### Features

- Potentiostatic probes include high-grade insulation
- Installation kit included
- Multi-language menu
- Wizard probe calibration and degree of health
- Proportional activation relay via TWM (time width modulation) mode
- Proportional mA current output (4 - 20 mA)

## Kontrol 65

The Kontrol 65 range is a series of single-measure controllers for pool applications covering multiple parameters. SEKO's latest controller features a bar function that enables rapid menu navigation.

### Kontrol 65 - pH

Parameters: pH (0 - 14)

### Kontrol 65 - ORP

Parameters: ORP ( $\pm 2,000$  mV)

### Kontrol 65 - CL

Parameters: Free chlorine (0 - 5ppm)

### Kontrol 65 - Flow rate

Parameters: Flow rate (0 - 99,999 l/s)

### Kontrol 65 - TB

Parameters: Turbidity (0 - 10 NTU)

Pool size	Professional
-----------	--------------

### IP65 Enclosure

Dimensions	144 x 144 x 123 mm (L x H x D)
------------	--------------------------------

Material	ABS
----------	-----

### Main Board

Alphanumeric display	128 x 128 pixel with backlight
----------------------	--------------------------------

Power supply	24 - 110 - 220 Vac, 50/60Hz
--------------	-----------------------------



### Features

- Amperometric and potentiostatic probes include high-grade insulation
- Installation kit included
- Multi-language menu
- Wizard probe calibration and degree of health
- Proportional activation relay by TWM (time width modulation) mode
- Proportional mA current output (4 - 20 mA)
- Proportional frequency output to drive digital pump

# Kontrol 100

Offering professional single-measure control, the advanced Kontrol 100 is designed for use in high-end swimming pool applications and is equipped with analogue and digital outputs that can be programmed via software, providing the user with full programming autonomy.



## Kontrol 100 - pH

Parameters: pH (0 - 14)

## Kontrol 100 - ORP

Parameters: ORP ( $\pm 2,000$  mV)

## Kontrol 100 - CL

Parameters: Free chlorine (0 - 5ppm)

## Kontrol 100 - Flow rate

Parameters: Flow rate (0 - 99,999 l/s)

## Kontrol 100 - TB

Parameters: Turbidity (0 - 10 NTU)

Pool size	Professional
-----------	--------------

## IP65 Enclosure

Dimensions	144 x 144 x 123 mm (L x H x D)
Material	ABS

## Main Board

Graphic display	128 x 128 pixel with backlight
Power supply	100 - 240 Vac, 50/60Hz

## Features

- KommBox or KommSpot gateway devices enables access to SekoWeb
- Potentiostatic probes with advanced insulation
- Installation kit included
- Multi-language menu
- Wizard probe calibration and degree of health
- Proportional activation relay by TWM (time width modulation) mode
- Proportional and PID mA current output (4 - 20 mA)
- Proportional frequency output (1 - 400 pulses/minute) to drive digital pump



# Kontrol 42

A basic double-measure control instrument, the Kontrol 42 features double parameters with separate displays to simplify measurement reading along with a separate menu for parameter setting.

## Kontrol 42 - pH-ORP

Parameters: pH (0 – 14) and ORP ( $\pm 1,500$  mV)

## Kontrol 42 - pH-CL

Parameters: pH (0 – 14) and free chlorine (0 – 5ppm)

Pool size	Professional
-----------	--------------

## IP65 Enclosure

Dimensions	278 x 285 x 140 mm (L x H x D)
------------	--------------------------------

Material	PP
----------	----

## Main Board

Double alphanumeric display	16 characters x 2 lines
-----------------------------	-------------------------

Power supply	100 – 240 Vac, 50/60Hz
--------------	------------------------



## Features

- Potentiostatic probes with advanced insulation
- Installation kit included
- Multi-language menu
- Wizard probe calibration and degree of health
- Proportional activation relay by TWM (time width modulation) mode
- Proportional mA current output (4 – 20 mA)

# Kontrol 102

The Kontrol 102 series are professional double-measure controllers designed for advanced high end swimming pool water-treatment application. All models are equipped with analogue and digital outputs that can be set via software to give the user full programming autonomy.

## Kontrol 102 - pH-ORP

Parameters: pH (0 – 14) and ORP ( $\pm 2,000$  mV)

## Kontrol 102 - pH-CL

Parameters: pH (0 – 14) and free chlorine (0 – 5ppm)

Pool size	Professional
-----------	--------------

## IP65 Enclosure

Dimensions	220 x 144 x 123 mm (L x H x D)
------------	--------------------------------

Material	ABS
----------	-----



## Main Board

Graphic display	240 x 128 pixel with backlight
-----------------	--------------------------------

Power supply	100 – 240 Vac, 50/60Hz
--------------	------------------------

## Features

- KommBox or KommSpot gateway devices enables access to SekoWeb
- Amperometric and potentiostatic probes with advanced insulation
- Installation kit included
- Multi-language menu
- Wizard probe calibration and degree of health
- PID algorithmic for 4-20 mA current output
- Proportional activation relay by TWM (time width modulation) mode
- Proportional frequency output (1 – 400 pulses/minute) to drive digital pump

# Kontrol 800



The Kontrol 800 is a professional multi-parameter controller capable of measuring up to six values simultaneously, providing an advanced solution to measurement, data reading and adjustment.

## Kontrol 800 - CL

Parameters: Free chlorine (0 – 5ppm)

## Kontrol 800 - pH-CL

Parameters: pH (0 – 14) and free chlorine (0 – 5ppm)

## Kontrol 800 - pH-ORP-CL

Parameters: pH (0 – 14), ORP ( $\pm 2,000$  mV) and free chlorine (0 – 5ppm)

## Kontrol 800 - pH-ORP-EC COND

Parameters: pH (0 – 14), ORP ( $\pm 2,000$  mV) and conductivity (0 – 20,000  $\mu$ S)

## Kontrol 800 - CL-Pot

Parameters: Free chlorine potentiostatic probe (0 – 10 ppm)

## Kontrol 800 - pH-CL-Pot

Parameters: pH (0 – 14) and free chlorine potentiostatic probe (0 – 10ppm)

## Kontrol 800 - pH-ORP-CL-Pot

Parameters: pH (0 – 14), ORP ( $\pm 2,000$  mV) and free chlorine potentiostatic probe (0 – 10ppm)

Pool size	Professional
-----------	--------------



## IP65 Enclosure

Dimensions 278 x 285 x 140 mm (L x H x D)

Material PP

## Main Board

Alphanumeric display 20 characters x 4 lines

Power supply 100 – 240 Vac, 50/60Hz

## Features

- KommBox or KommSpot gateway devices enables access to SekoWeb
- Amperometric and potentiostatic probes with advanced insulation
- Installation kit included
- Multi-language menu
- Wizard probe calibration and degree of health
- Proportional activation relay by TWM (time width modulation) mode
- Proportional frequency output (1 – 120 pulses/minute) to drive digital pump
- Proportional mA current output (4 – 20 mA)

# Kontrol 800 Tech



Kontrol 800 Tech is a professional multi-parameter controller that manages up to seven measurements simultaneously. This high-end device offers a complete range of measurements with the ability to adjust parameters as required.

## Kontrol 800 - pH-ORP-CL

Parameters: pH (0 – 14), ORP ( $\pm 2,000$  mV) and free chlorine (0 – 5ppm)

## Kontrol 800 - pH-ORP-CL-TB

Parameters: pH (0 – 14), ORP ( $\pm 2,000$  mV), free chlorine (0 – 5ppm) and turbidity (0 – 10 NTU)

## Kontrol 800 - pH-ORP-TB-Free/Total/Combine Chlorine

Parameters: pH (0 – 14), ORP ( $\pm 2,000$  mV), turbidity (0 – 10 NTU) and free, total and combined Chlorine (0 – 5ppm)

Pool size Professional



## IP65 Enclosure

Dimensions 278 x 285 x 140 mm (L x H x D)

Material PP

## Main Board

Graphic display 240 x 128 pixel with backlight

Power supply 100 – 240 Vac, 50/60Hz

## Features

- KommBox or KommSpot gateway devices enables access to SekoWeb
- Amperometric and potentiostatic probes with advanced insulation
- Installation kit included
- Multi-language menu
- Wizard probe calibration and degree of health
- Proportional activation relay by TWM (time width modulation) mode
- Proportional frequency output (1 – 120 pulses/minute) to drive digital pump
- Proportional mA current output (4 – 20 mA)



## Side Channel Blowers

This blower system for spa and professional swimming pool applications delivers high-quality, powerful performance. The first choice for applications that require large volumes of clean, dry air with low pressures and voids, SEKO's Side Channel Blower offers ease of installation, reduced operating noise levels and low energy consumption.

### BL040 - Single impeller

Flow rate	145 m <sup>3</sup> /h
Pressure	up to 200 mbar
Vacuum	up to -170 mbar
Noise	63 dB A
Dimensions	286 x 302 x 294 mm (L x H x D)

### BL050 - Single impeller

Flow rate	210 m <sup>3</sup> /h
Pressure	up to 270 mbar
Vacuum	up to -220 mbar
Noise	64 dB A
Dimensions	334 x 337 x 346 mm (L x H x D)

### BL820 - Double impeller

Flow rate	900 m <sup>3</sup> /h
Pressure	up to 370 mbar
Vacuum	up to -280 mbar
Noise	74 dB A
Dimensions	500 x 550 x 694 mm (L x H x D)



### IP65 Enclosure

Material	Aluminium
----------	-----------

### Main Board

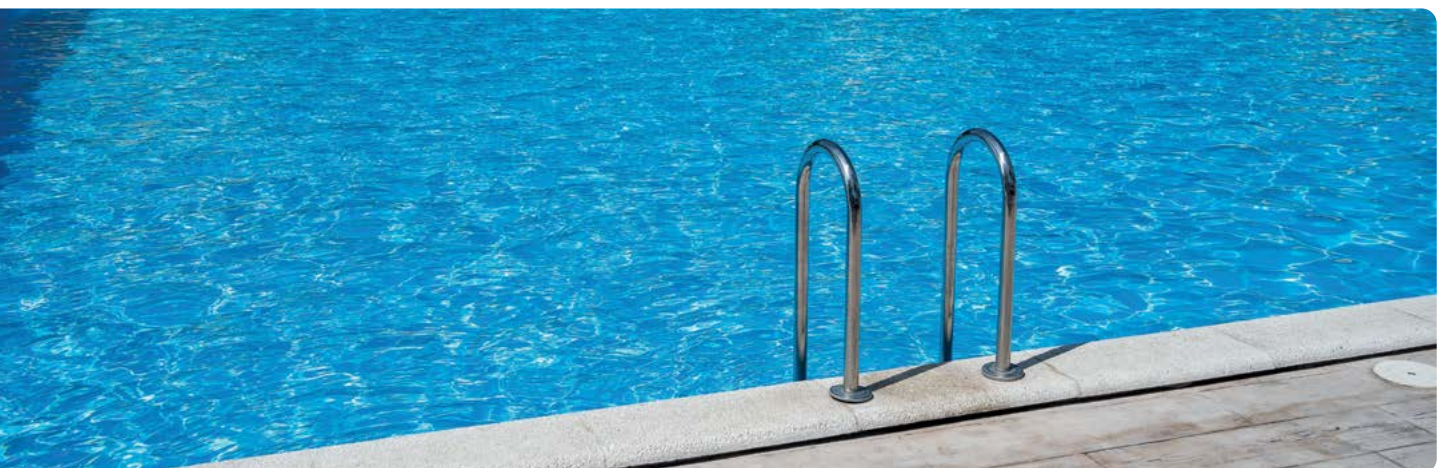
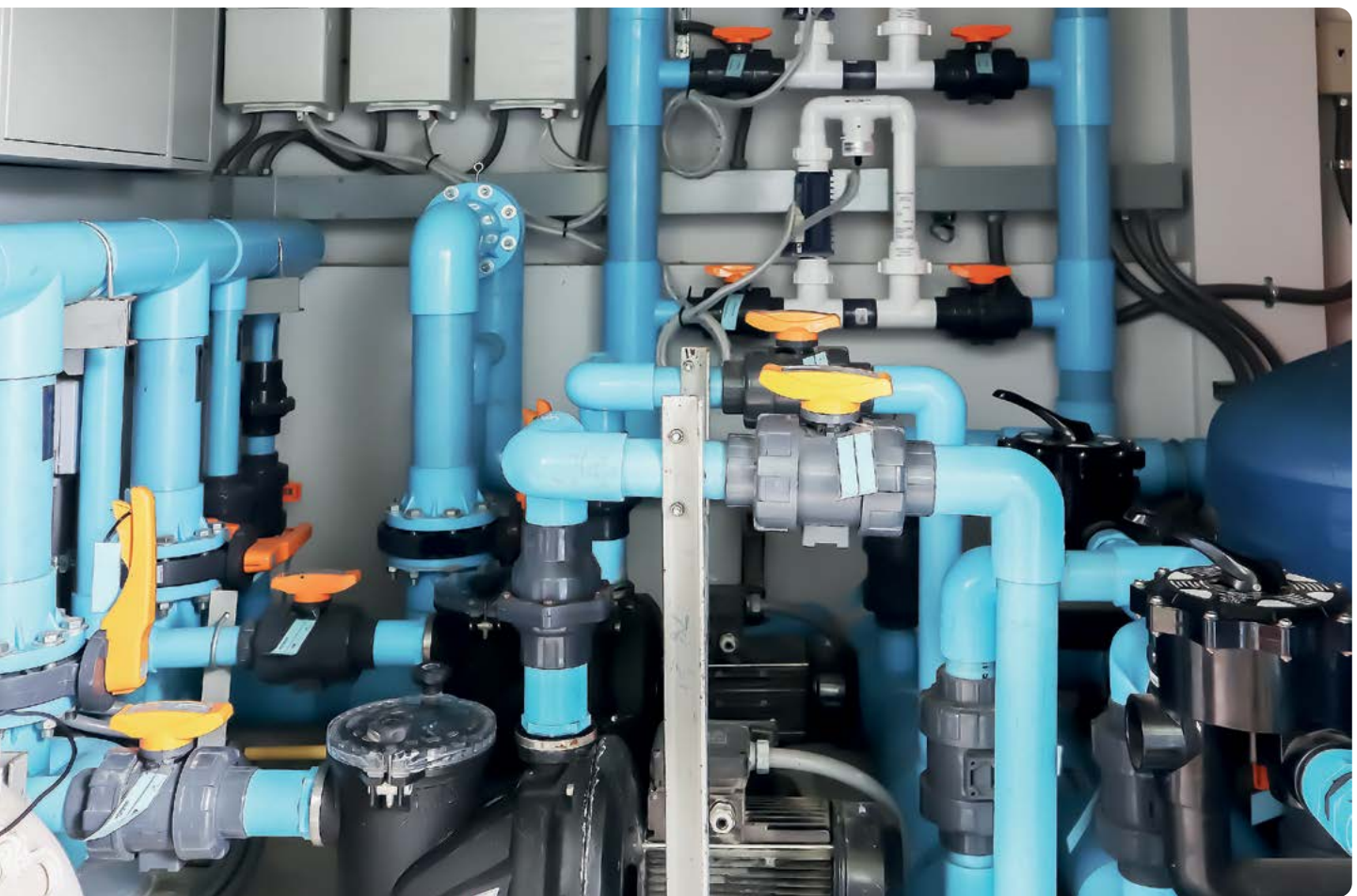
Power supply	30 Vac or 400 Vac, 50/60Hz
--------------	----------------------------

### Features

- Designed to work in continuous service
- Easy vertical or horizontal installation
- Equipped with quiet-running induction motors
- IP54 protection degree
- Robust and reliable
- No contamination of gasses or conveyed air



# Accessories for Pools & Spas



# Product overview



## Probes

**Measurements**    pH, ORP, Temp, CL, TR, PAA, H<sub>2</sub>O<sub>2</sub>



## Probe Fixtures, Piping & Cabling

**Models**    Probe holder  
Grounding pipe coupling  
Piping  
Cable probes



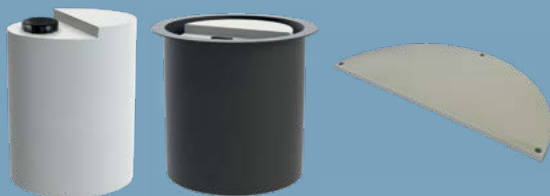
## Buffer Solution

**Models**    pH, ORP



## Water Meters

**Models**    DN25 / 1"  
DN50 / 2"  
DN80 / 3"  
DN100 / 4"



## Tanks & Reinforcement Plates

<b>Models</b>	SER50	T150	SML100
	SER100	T300	SML250
	SER300	T400	SML300
	SER500	T800	SML500
	SER1000	T1500	SML1000



## Mixers

**Models**    Slow speed  
High speed

## Accessories

SEKO has developed a full range of accessories to ensure engineers have every element they need to deliver the most professional installation.

### SPH pH probes

Models	
SRH-11.5M	Range 2–12 pH ; Pressure 0–6 bar ; Body Epoxy ; Membrane Glass ; Connections Cable 1.5 m + BNC
SRH-1 6M	Range 2–12 pH ; Pressure 0–6 bar ; Body Epoxy ; Membrane Glass ; Connections Cable 6 m + BNC
SPH-2	Range 2–12 pH ; Pressure 0–6 bar ; Body Epoxy ; Membrane Glass ; Connections S8
SPH-3 WW	Range 2–12 pH ; Pressure 0–6 bar ; Body Glass ; Membrane Glass ; Connections S8



### SRH ORP probes

Models	
SRH-11.5M	Range $\pm 1,000$ mV ; Pressure 0–6 bar ; Body Epoxy ; Membrane Platinum wire ; Connections Cable 1.5 m + BNC
SRH-1 6M	Range $\pm 1,000$ mV ; Pressure 0–6 bar ; Body Epoxy ; Membrane Platinum wire ; Connections Cable 6 m + BNC
SPH-1 6M AU	Range $\pm 2,000$ mV ; Pressure 0–6 bar ; Body Epoxy ; Membrane Gold ; Connections Cable 6 m + BNC
SRH-3 PT	Range $\pm 2,000$ mV ; Pressure 0–6 bar ; Body Glass ; Membrane Platinum wire ; Connections S8



### CL Chlorine potentiostatic probes

Professional chlorine potentiostatic probe that uses an amperometric cell and membrane cup.

Models	
F-CL 2	Range 0–10 ppm ; pH 4–12 ; Flow rate 30 l/h ; Temperature 45°C ; Pressure 0.5 bar ; Membrane M48 ; Electrolyte ECC1 ; Application fields Organic free chlorine
F-CL 3	Range 0–10 ppm ; pH 4–11 ; Flow rate 30 l/h ; Temperature 45°C ; Pressure 0.5 bar ; Membrane M48 G ; Electrolyte ECS1 Gel ; Application fields Inorganic free chlorine





## GPC Grounding Pipe Coupling and RNC (Reduce Noise Current) electrode

To obtain the best performance in pH and redox measurements when using a Tekna TPR pump with electrical grounding, SEKO recommends using the GPC Series Grounding Pipe.



Models	Parameters
<b>GPC-63</b> DN63 diameter connection to glue tubes to PVC body <b>GPC-50</b> DN50 diameter connection to glue tubes to PVC body	<b>Pressure</b> 3 bar ; <b>Temperature</b> 50°C
<b>RNC</b> 12 mm diameter size	<b>Pressure</b> 0 - 7 bar ; <b>Body</b> AISI 304

## PT Temperature probes

Models	Parameters
<b>PT 100V</b>	<b>Range</b> 0–100°C ; <b>Pressure</b> 0–7 bar ; <b>Body</b> Pyrex ; <b>Connections</b> 5 m 3-wire cable
<b>PT 100V PG</b>	<b>Range</b> 0–100°C ; <b>Pressure</b> 0–7 bar ; <b>Body</b> Pyrex ; <b>Connections</b> 6 m 3-wire cable
<b>PT 100 NUT</b>	<b>Range</b> 0–100°C ; <b>Pressure</b> 0–7 bar ; <b>Body</b> PP ; <b>Connections</b> 1 m 2-wire cable



## S461/LT Turbidimetric probes

The measurement principle is based on the deviation of light produced by suspended particles in the liquid.

Parameters	Body	Projector & Sensors
<b>Measure</b> 0.02–10 FTU/NTU ; <b>Pressure</b> 0–4 bar ; <b>Temperature</b> 0–60°C	<b>Material</b> PVC special optical glass and Viton threaded connection 1" GAS	Scattering at 90° light absorption with 10 m cable



## SFW paddlewheel flow sensor

The SFW paddle wheel flow sensor is designed to be used with every kind of solid-free liquid. The sensor offers highly consistent and repeatable measurements of flow from 0.15 m/s (0.5 ft/s) producing a frequency output signal.

Models	Fluid	Materials
<b>SFW-1</b> Size DN 100–4" <b>SFW-2</b> Size DN 200–8"	Speed Range 0.15 - 8m/s [0.5–25ft/s]	<b>Sensor body</b> PVC-C ; <b>O-rings</b> FPM ; <b>Rotor</b> ECTFE (Halar®) ; <b>Shaft</b> Ceramic (Al <sub>2</sub> O <sub>3</sub> ) ; <b>Bearings</b> Ceramic (Al <sub>2</sub> O <sub>3</sub> ) ; <b>IP65</b> ingress protection



## PSS-plexi modular probe holder (patented product))

Professional modular probe holder with amperometric cell for free chlorine measurement.

### Models

Flux/pH/ORP	Probes Connection 12 and 24 mm
Flux/pH/Amperometric chlorine	Hydraulic By-Pass
Flux/pH/ORP/Amperometric chlorine	Max. Temperature 60°C
Flux/pH/Potentiostatic chlorine	Max. Pressure 5 bar
Connection In/Out 8 x 12 mm (tube)	Material Plexiglass without colour



## By-pass probe holder with cartridge filter

By-pass probe holder for quick installation of pH, ORP and temperature probes.

### Models

PSS 7 Single	Connection process By-pass ; No. Probes 1 ; Temperature 0 – 40°C ; Pressure 0 – 6 bar ; Material PP + SAN
PSS-Pipe probe holder for above ground pools	In-line probe holder for quick installation of pH, ORP, temperature probes and chemical injection point. Connection process for flexible tube DN32 and DN38 ; Temperature 0 – 40°C ; Pressure 0 – 3 bar ; Material PP



## By-pass probe holder

By-pass probe holder for quick installation pH, ORP and temperature probes.

### Models

PSS 8-A	Connection process By-Pass ; No. Probes 3 ; Diameter PG 13.5 and 12 mm ; Temperature 0 – 40°C ; Pressure 0 – 5 bar ; Material PP + Transparent SAN
PSS 8-A1	Connection process By-Pass ; No. Probes 3 ; Diameter PG 13.5 and 12 mm ; Temperature 0 – 40°C ; Pressure 0 – 2 bar ; Material PP + Black PP
PSS 8-B1	Connection process By-Pass ; No. Probes 1 ; Diameter 33, 35 and 42 mm ; Temperature 0 – 40°C ; Pressure 0 – 5 bar ; Material PP + Black PP
PSS 8-C	Connection process By-Pass ; No. Probes 1 ; Diameter 24 mm ; Temperature 0 – 40°C ; Pressure 0 – 5 bar ; Material PP + Transparent SAN



## Insertion probe holder

Pressurised probe holder for small residential pools.

### Models

PSS3	Connection process ½" G.M. ; Probes connection PG 13.5 or Ø 12 mm ; Temperature 0 – 60°C ; Pressure 0 – 7 bar ; Material PVC
SPP	Connection process 1" G.F. ; Probes connection PG 13.5 ; Temperature 0 – 60°C ; Pressure 0 – 16 bar ; Material PVC



## Clamp saddles (for paddlewheel flow sensor)

For SFW-1 Size DN 100 – 4" / for SFW-2 Size DN 200 – 8"

Materials **Body** PP (Polypropylene) ; **Gasket** FPM



## CE cables with S7 heads (for probes)

Models Specification

**CE5B** Length 5 m ; Type of cable Mod. RG58 5 mm ; Terminal block Soldered BNC

**CE10B** Length 10 m ; Type of cable Mod. RG58 5 mm ; Terminal block Soldered BNC



## CC15 cables (for paddlewheel flow sensor)

Models Features

Length 15 m **Resistance** 130 Ohm/Km  $\pm$  5% ; **Temperature** -15 – 70°C ;  
**Capacity Wire/Shield** 150 pF/m ; **Capacity Wire/Wire** 80 pF/m ;  
**Max Voltage** 49 V ; **Nominal section** 8 mm<sup>2</sup>



## Certified buffer solutions

Complete buffer solution range for professional calibration.

Models

**KIT ST** pH 4.00 and 7.00 ; **Quantity** 70 cc each  
pH 4.00 and 7.00 ; **ORP** 465 mV ; **Quantity** 70 cc each

**ST PH 4** pH 4.00 ; **Temperature** 20°C ; **Quantity** 250 ml

**ST PH 7** pH 7.00 ; **Temperature** 20°C ; **Quantity** 250 ml

**ST PH 7** pH 9.22 ; **Temperature** 20°C ; **Quantity** 250 ml

**ST RX 465** **ORP** 465 mV ; **Temperature** 25°C ; **Quantity** 250 ml



## Housings (for filter cartridges)

Models **Minor 5"** pressure up to 8 bar ; **Flow rate** up to 120 l/m ;  
**Temperature** 2 – 40°C

Materials **Non-toxic materials** ; **Head** Loaded PP ;  
**IN/OUT threaded inserts** Brass ; **Cup** SAN ; **O-Ring** NBR



## Filter cartridges

<b>Models</b>	RLN 20µm temperature 2–40°C RLN 80µm temperature 2–40°C
<b>Materials</b>	Non-toxic materials ; Filtering Nylon (polyamide) ; External supports PP ; Cup PP ; Seals EPDM



## Faucet

<b>Models</b>	<b>Connections</b> IN ½ Gas F – OUT ½ Gas M ; <b>Material</b> Grey PVC- UC Body
---------------	---



## TC1 Threaded water meters

Single-jet water meters with pulse sender, dry dial and roller reading. Suitable for cold water up to 30°C.

<b>Models</b>	
25 MM/1"	<b>4 pulse/l or 1 pulse/l Max flow (short period)</b> 7 m <sup>3</sup> /h ; <b>Nominal flow</b> 3.5 m <sup>3</sup> /h ; <b>Min flow</b> (accuracy ±5%) 70 l/h
50 MM/2"	<b>4 pulse/l or 1 pulse/l Max flow (short period)</b> 30 m <sup>3</sup> /h ; <b>Nominal flow</b> 15 m <sup>3</sup> /h ; <b>Min flow</b> (accuracy ±5%) 450 l/h



## FC Flanged water meters

Woltmann series water meters with dry dial reading and pulse sender. Suitable for cold water up to 30°C.

<b>Models</b>	
DN 80/3"	<b>Max flow</b> (short period) 80 m <sup>3</sup> /h ; <b>Nominal flow</b> 40 m <sup>3</sup> /h ; <b>Min flow</b> (accuracy ±5%) 0.7 m <sup>3</sup> /h
DN 100/4" 50 MM/2"	<b>Max flow</b> (short period) 120 m <sup>3</sup> /h ; <b>Nominal flow</b> 60 m <sup>3</sup> /h ; <b>Min flow</b> (accuracy ±5%) 1.2 m <sup>3</sup> /h



## SER Polyethylene tanks

Our tanks are designed to be assembled with dosing systems, mixers and motor-driven or solenoid-driven dosing pumps. All are made from food-safe polyethylene and are resistant to almost every chemical typically encountered.

Models	Capacity	Height	Diameter Ø
SER50	50 l	45.5 cm	40 cm
SER100	100 l	64 cm	46 cm
SER250	250 l	87 cm	60 cm
SER300	300 l	95 cm	67 cm
SER500	500 l	119 cm	76 cm
SER1000	1,000 l	122 cm	109 cm

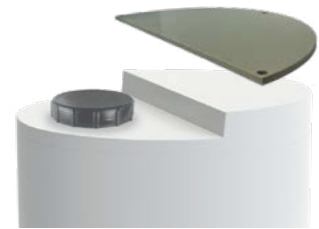




## SML Reinforcement Plate

Tank reinforcement made of PVC (20 mm thick) to be used to install mixers and motor-driven or solenoid-driven dosing pumps on SER series tanks.

Models	Tank model SER	Models	Tank model SER
SML100	100	SML250	250
SML300	300	SML500	500
SML1000	1000		



## Containment tanks in polyethylene

Designed to contain our SER series tanks. Material food-safe polyethylene.

Models	Tank model SER	Height	Diameter Ø
T150	100	75.5 cm	51 cm
T300	250	87.5 cm	67 cm
T400	300	99 cm	72 cm
T500	500	120 cm	90 cm
T1000	1000	134 cm	122 cm



## Mixers

Mixers with 0.12 kW single phase electric motors, either slow (200 rpm) or fast (1,400 rpm), flange attachment, shaft and propeller in PVC.

### Models

#### Slow mixers (200 RPM)

Tank model SER 300 ; Shaft 900 mm ; Propeller 220 mm

Tank model SER 500/1000 ; Shaft 1,100 mm ; Propeller 220 mm

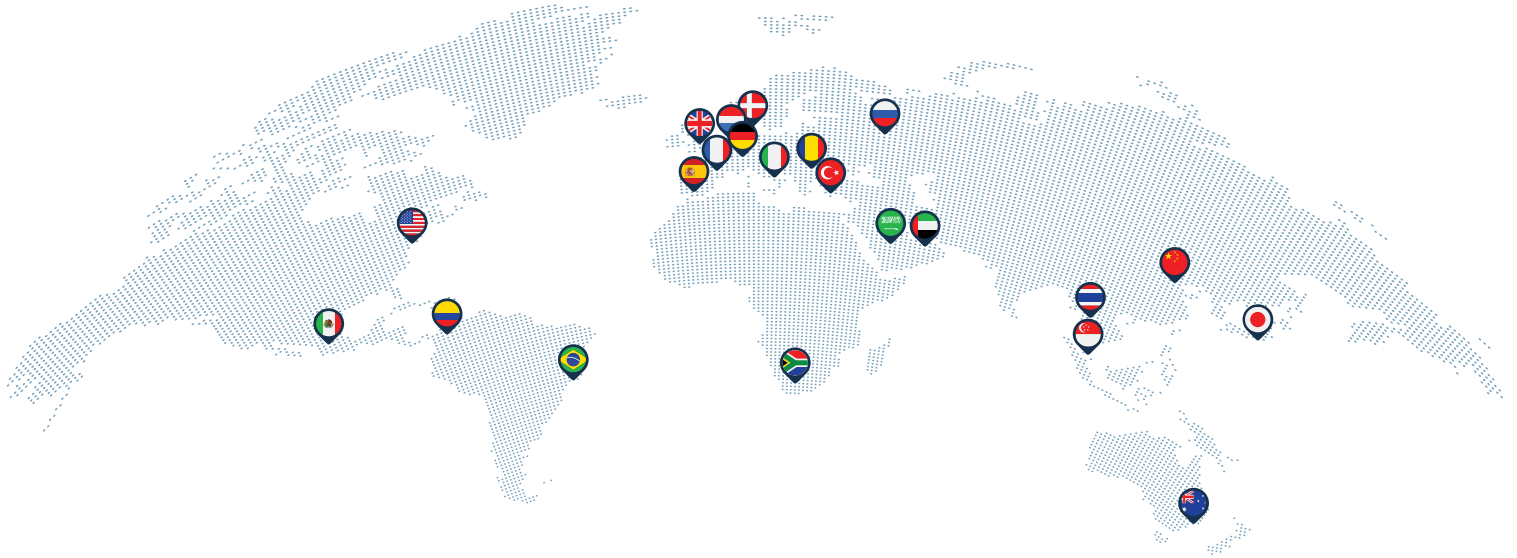
#### Fast mixers (1,400 rpm)

Tank model SER 300 ; Shaft 900 mm ; Propeller 220 mm

Tank model SER 500/1000 ; Shaft 1,100 mm ; Propeller 220 mm



# Globally Present, Locally Active



Twenty-two national SEKO companies across six continents means that, wherever you are, you enjoy the same exceptional level of service as every SEKO customer around the world.

And an accredited partner distributor network allows us to provide local customer support in over 120 countries, so you benefit from region-specific knowledge and rapid delivery of goods as well as world-class after-sales service and technical assistance.

## SEKO Hub

### A world of SEKO in one

For everyone from buyers and engineers to end users, SEKO Hub is the ultimate all-encompassing platform that brings you to the heart of SEKO and gives you what you need when you need it.

Bringing together essential documents such as manuals, case studies, data sheets and brochures as well as tutorial videos, favourite products, an appointment booking system and so much more, SEKO Hub is a central personalised platform to revolutionise the way you work.

SEKO Hub is available online or via app, so you're never without it whether you're at work, at home or on the move. It's your home for the complete SEKO experience, so join SEKO Hub and make our world a part of yours.

SEKO products are intended for professional use in industrial applications only and are not available for domestic or retail sale. SEKO reserves the right to amend and change specifications without prior notice. All pictures shown are for illustration purpose only. Actual product may vary due to product enhancement. Published data may be subject to change.

© 2024 SEKO, LAYOUT AND ORIGIN: UK, 850001 POLSPA EN V012



[seko.com](https://seko.com)